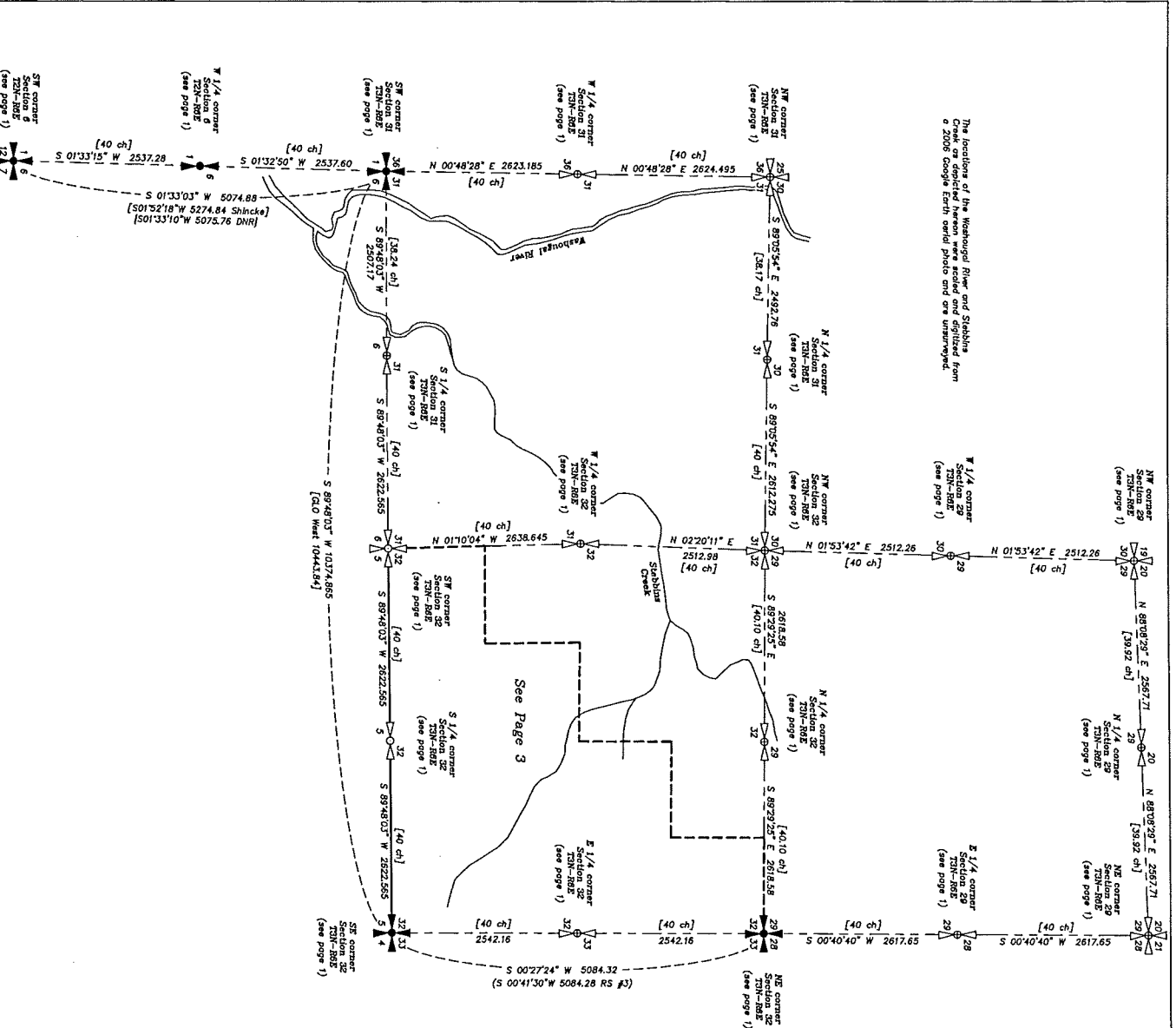




Record of Survey for the purpose of establishing timber cutting agreement lines being a portion of Section 32, Township 3 North, Range 6 East, W.M. in Skamania County, Washington. (Page 2 of 3 Pages)

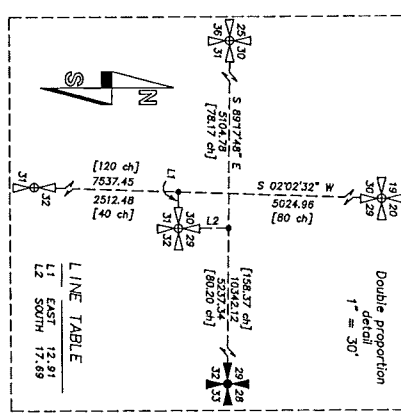
The locations of the Washougal River and Stephens Creek as depicted herein were scaled and digitized from a 2006 Google Earth aerial photo and are unswayed.



Beta of bearings: True bearings as derived from GPS observations. Convergence angle of the SE corner of Section 32 is -0°15'28\".

- Found corner as noted
- Set corner as noted
- ⊙ Set 1/2" rebar with cap US 36792 "agreement corner"
- ⊕ Set 1/2" rebar with cap US 36792 "true only"
- ⊗ Calculated position
- Blazed, painted and flagged property line
- Blazed, painted and flagged agreement line

Reference Surveys:  
 1) GLO survey Township 3 North, Range 6 East by C.E. Sears under  
 2) B.M. Shinnick, P.L.S. 13516, Book 2, Page 271 (1979)  
 3) H.T. Land, J., P.L.S. 21490, Book 3, Page 88-71 (1992)  
 4) H.T. Land, J., P.L.S. 21490, Book 3, Page 89 (1992)  
 5) C.L. Pennington, P.L.S. 18067, 18068, 18069, 18070, 18071, 18072, 18073, 18074, 18075, 18076, 18077, 18078, 18079, 18080, 18081, 18082, 18083, 18084, 18085, 18086, 18087, 18088, 18089, 18090, 18091, 18092, 18093, 18094, 18095, 18096, 18097, 18098, 18099, 18100 (2006)  
 6) Unswayed preliminary survey of portions of Sections 29, 30, 31 and 32, Township 3 North, Range 6 East by Susan L. Simms, P.L.S. 21490, Book 3, Page 88-71 (1992)  
 7) Timber Creek in Clatsop, WA and Butler Surveying, Inc. in Chehalis, WA.



BUTLER SURVEYING INC.  
 1718 N.W. CENTRALE AVENUE  
 P.O. BOX 148, CHEHALIS, WA 98532  
 360.748-8903

Drawn	C. Butler	Date	1-12-2012
Checked	US	Job No.	11-89
Scale	1" = 1000'		
Sheet	2 of 3		



NE corner Section 32 T3N-80E (see page 1)

Agreement Corner # 7 (see page 1)

N 1/4 corner Section 32 T3N-80E (see page 1)

NE corner Section 32 T3N-80E (see page 1)

N 02°20'11" E 2512.89

2527.15 N 00°29'58" E 1263.575

1267.325 N 00°28'41" E 2534.85

1271.08 S 00°27'24" W 2542.16

The location of Stebbins Creek as depicted hereon was aerial and digitized from a 2005 Google Earth aerial photo and is unsurveyed.

W 1/4 corner Section 32 T3N-80E (see page 1)

Set line only rebar of base of cliff on Stebbins Creek

Agreement Corner # 4 (see page 1)

E 1/4 corner Section 32 T3N-80E (see page 1)

2638.645 S 89°29'44" E 1319.323

2613.85 S 89°29'44" E 1306.925

2589.81 N 00°29'58" E 1294.805

1310.26 S 89°29'44" E 2620.32

2659.76 S 89°40'24" E 1320.59

1300.49

1294.805

1310.26 S 89°40'03" W 2622.565

SW corner Section 32 T3N-80E (see page 1)

S 1/4 corner Section 32 T3N-80E (see page 1)

SW corner Section 32 T3N-80E (see page 1)

N 00°20'31" W 1306.925

1311.282 S 89°40'03" W 2622.565

S 89°40'03" W 2622.565

S 00°27'24" W 2542.16

property line marked in 2005 (see ref. survey # 5)



SCALE: 1"=1000 FEET  
0 500 1000 2000

Beats of bearings: True bearings as derived from GPS observations. Convergence angle of the SE corner of Section 32 is -01°15'28". The distances shown hereon are ground scale. To convert to grid distances multiply by a combined scale factor of 0.99989573.

- Found corner as noted
- Set corner as noted
- ⊙ Set 1/2" rebar with cap LS 36792 "agreement corner"
- ⊙ Set 1/2" rebar with cap LS 36792 "line only"
- ⊕ Calculated position
- ▬▬▬ Blazed, painted and flagged property line
- ▬▬▬ Blazed, painted and flagged agreement line
- ▬▬▬ Approximate location newly constructed logging roads extrapolated from BS field control points and FPA maps.

- Reference Surveys:
- 1) G20 survey Township 3 North, Range 6 East by C.E. Sears under P.O. 21490, PLS 21490, Book 2, Page 271 (1979)
  - 2) R.L. Shook, PLS 13516, Book 2, Page 271 (1979)
  - 3) H.T. Lohd, Jr., PLS 21490, Book 2, Page 68-71 (1982)
  - 4) H.T. Lohd, Jr., PLS 21490, Book 2, Page 89 (1982)
  - 5) C.L. Popp, PLS 22330, 47N 2005162403 (2005)
  - 6) C.L. Popp, PLS 22330, 47N 2005162403 (2005)
  - 7) Unrecorded preliminary survey of portions of Sections 29, 30, 31 and 32, Township 3 North, Range 6 East by Jason L. Shook, PLS 21490, Book 2, Page 271 (1979)
- Timber Co. in Langston, WA and Butler Surveying, Inc. in Shelton, WA.

LINE TABLE

NO.	BEARING	DISTANCE
L1	S 89°09'44" E	333.80
L2	N 00°29'58" E	55.00

**BUTLER SURVEYING INC.**  
475 NW CHEROKEE AVENUE  
P.O. BOX 148 CHEROKEE, WA 98832  
360/748-8803

Drawn C. Butler Date 1-12-2012  
Checked *CS* Job No. 11-89  
Scale 1" = 400' Sheet 3 of 3



Record of Survey for the purpose of establishing timber cutting agreement lines being a portion of Section 32, Township 3 North, Range 6 East, W.M. in Skamania County, Washington.  
(Page 3 of 3 Pages)

**NE corner Section 21-T15N-R10W**  
 Found a 1" aluminum pipe established by Meyerhouser from 1 found original bearing from 1976 reference survey # 2. Set 1 1/2" rebar with aluminum cap stamped per the BLM manual replacing the found pipe (2011).

**Rp's**  
 - 12" hemlock stump with spike and log N35E 10.50  
 - 16" hemlock stump with spike and log S21E 17.50

**W 1/4 corner Section 21-T15N-R10W**  
 Position searched for, no evidence found. Calculated by slope proportion, not set. This survey mapped a road creek flowing N 1/2" corner West, being 2.62 chains (166.12') South of the 1/4 corner. The relative fit of this ground cell is taken to support the calculated position.

**SE corner Section 21-T15N-R10W**  
 Found a 1" aluminum pipe with 3" exposed. Corner was established by Meyerhouser from 1 found original bearing from 1976 reference survey # 2. Set 1 1/2" rebar with aluminum cap stamped per the BLM manual replacing the found pipe (2011).

**Found Rp's**  
 - 12" hemlock stump with log N40W 14.50 (CLO 20" hemlock N40W 15.84)  
 - 16" hemlock stump with log S21E 17.50  
 - Creek flowing SW North 715' (CLO North 709.5')

**S 1/4 corner Section 21-T15N-R10W**  
 Found 1" aluminum pipe with 0.5" exposed and cedar guard post and log (2011). Corner was established by Meyerhouser from 1 found original bearing from 1976 reference survey # 2. Set 1 1/2" rebar with aluminum cap stamped per the BLM manual inside the found pipe (2011).

**Rp's**  
 - 17" hemlock stump with log S20W 14.55  
 - 16" hemlock stump with log N71E 17.10

**SE corner Section 21-T15N-R10W**  
 Position of 1 1/2" aluminum pipe established by Meyerhouser from found top in 1976 (see reference survey # 2) and recovered by Dept. of Game surveys in 1982 (see reference survey # 3). Calculated holding field less to the E 1/4 corner and NE corner of Section 21 as depicted on reference survey # 3. Not visited by this survey.

**E 1/4 corner Section 21-T15N-R10W**  
 Found a 1 1/2" aluminum pipe with plug and lock established by Meyerhouser replacing a found post in 1976 (see reference survey # 2) and recovered by Dept. of Game surveys in 1982 (see reference survey # 3). No original GLO evidence was found, accepted on the 1/4 corner by relocation and prior circumstances. Set 1 1/2" rebar with aluminum cap stamped per the BLM manual inside the found pipe (2011).

**Found Rp's**  
 - 6" cedar stump with log S20E 14.55  
 - 21" hemlock stump with log N40W 14.50  
 - 21" hemlock stump with log N40W 14.50

**NE corner Section 21-T15N-R10W**  
 Found 1" aluminum pipe with 0.5" exposed. Corner was found by Meyerhouser in 1976 reference survey # 2 and recovered by Dept. of Game surveys in 1982 (see reference survey # 3). Set 1 1/2" rebar with aluminum cap stamped per the BLM manual inside the found pipe (2011).

**Found Rp's**  
 - 12" hemlock stump S50W 7.90  
 - 6" cedar stump N27W 13.70  
 - 25" hemlock stump N35E 32.80  
 - 23" hemlock stump S30E 14.60

**N 1/4 corner Section 21-T15N-R10W**  
 Position calculated by slope proportion, not set. As detailed on reference survey # 2 the GLO notes and measurements in Sections 9, 16, 21, 28 and 33-T15N-R10W are erroneous. This survey searched for the N 1/4 corner of Section 21 of both the original and relocated positions of this section. Neither search yielded any conclusive evidence of the GLO position so the slope proportion position is accepted pursuant to the BLM manual.

**N 1/4 corner Section 22-T15N-R10W**  
 Found disturbed 1 1/2" iron pipe with Game Department cap set of a slope from 1976. Position on reference survey # 2 (2011). Re-set pipe from the following corner Rp's:

**Rp's**  
 - 26" hemlock S47W 15.31  
 - 26" spruce S20W 20.60

**NE corner Section 22-T15N-R10W**  
 Accepted the double proportion position calculated as per reference survey # 5, not visited by this survey.

**E 1/4 corner Section 22-T15N-R10W**  
 Position calculated by slope proportion holding the double proportion position for the corner of Section 22. As detailed on reference survey # 5, the position for the corner of 1" iron pipe calculated as per reference survey # 11. Not visited by this survey.

**SE corner Section 22-T15N-R10W**  
 Position of a found 1" iron pipe calculated as per reference survey # 11 holding the S 1/4 and SW corner of Section 22 as shown hereon. Not visited by this survey.

**S 1/4 corner Section 22-T15N-R10W**  
 Found 2" iron pipe with plug and lock in railroad area as per reference survey # 5 and 11 (2011).

**Found Rp's**  
 - 24" cedar with nail and log N72E 7.74  
 - 24" hemlock with nail and log S31W 23.76  
 - 24" hemlock with nail and log S31E 46.85

**E 1/4 corner Section 15-T15N-R10W**  
 Found and accepted a 3/4" pipe with cap LS 196335 with 1.2" exposed as per reference survey # 3, 5 and 9 (2011).

**Found Rp's**  
 - 25" hemlock with nail and log N85W 22.20  
 - 25" spruce with log S07W 3.00  
 - 24" hemlock stump with log S35E 51.70  
 - 15" hemlock stump with log S30E 24.30

**NE corner Section 15-T15N-R10W**  
 Found and accepted a 1 1/2" aluminum pipe with 1.0" exposed set by Meyerhouser from 1 found original bearing from 1976 reference survey # 4. (see reference survey # 4) and as depicted on reference survey # 6 (2011).

**Found Rp's**  
 - 55" spruce with log N27W 28.07  
 - 56" spruce with log S02W 66.70

**N 1/4 corner Section 15-T15N-R10W**  
 Position established by single proportion on reference survey # 4. Found 5/8" rebar with cap LS 22442 set inside 1 1/2" iron pipe as per reference survey # 6 (2011).

**Found Rp's**  
 - 16" spruce with nail and log N25W 7.72  
 - 16" spruce with nail and log N62E 17.20

**NW corner Section 15-T15N-R10W**  
 Position established by modified double proportion on reference survey # 4. Position calculation by bearing intersection holding the found N 1/4 and NE corner of Section 15 and the found W 1/4 and SW corner of Section 12. Not visited by this survey.

**W 1/4 corner Section 15-T15N-R10W**  
 Position established by slope proportion on reference survey # 4. Found 1 1/4" iron pipe with cap LS 22442 protruding and position (2011).

**Found Rp's**  
 - 20" cedar with nail and log N25W 23.47  
 - 22" cedar with nail and log N03W 26.79

**N 1/4 corner Section 14-T15N-R10W**  
 Found 3/4" iron pipe with plug and lock with 1.0" exposed set from found GRT's as per reference survey # 7 and 9 (2011).

**Found Rp's**  
 - 27" hemlock stump S17W 19.40  
 - 27" hemlock stump S14E 20.48

**NE corner Section 14-T15N-R10W**  
 Found 5/8" rebar with cap LS 18918 with 1.0" exposed set from found GRT's as per reference survey # 7 and 9 (2011).

**Found Rp's**  
 - 15" hemlock snag with nail and log N10W 20.40  
 - 24" hemlock with nail and log N55E 13.00  
 - 18" hemlock with nail and log S10E 5.10  
 - 18" hemlock with nail and log S01E 7.45

**E 1/4 corner Section 14-T15N-R10W**  
 Position of rebar with aluminum cap set from 1 found BT calculated as per reference survey # 9. Not visited by this survey.

**SE corner Section 14-T15N-R10W**  
 Position of iron pipe with Wagon plug calculated as per reference survey # 9. Not visited by this survey.

**North River Conservation Tracks Segregation Survey**  
 Being portions of the Southwest Quarter and West Half of the Northwest Quarter of Section 14, all of Sections Section 22 and Southwest Quarter of Section 21, all of Sections 15 North, Range 10 Government Land Office, in Section 15 North, Township 15 North, Range 10 West, W.M., in Pacific County, Washington.

(Page 1 of 4 Pages)

**Base of bearings:** True bearings as derived from GPS observations. Convergence angle at the S 1/4 corner of Section 21 is -0229202"

- Found corner as noted
- Set 1/2" rebar with cap LS 36792
- ⊙ Set 1/2" rebar with cap LS 36792 "line only"
- ⊖ Calculated position

**Reference Surveys:**  
 1) GLO survey T15N R10W by D.F. Byles under Contract #34 (1950)  
 2) Unrecorded Plat showing relationship between GLO distance with actual distance between PLS 13006 and PLS 13005 a copy of which was obtained from PLS 0 in Olympia WA (1959-1976).

- 3) D.H. Jordan, PLS 13006, Book 1, Page 128 (1976)
- 4) D.H. Jordan, PLS 13006, Book 1, Page 200 (1976)
- 5) Unrecorded 1981 survey and subdivision of Section 22-T15N-R10W by Washington State Department of Fish and Game, a copy of which was obtained from the PLS 13006 Book 1, Page 24 (1983)
- 6) R.E. Norris, PLS 18918, Book 15, Page 108 (1995)
- 7) R.E. Norris, PLS 18918, Book 21, Page 64 (2000)
- 8) R.E. Norris, PLS 18918, Book 14, Page 192 (2001)
- 9) R.E. Norris, PLS 22482, Book 16, Page 12 (2003)
- 10) R.L. Kemp, PLS 22482, Book 16, Page 49 (2003)
- 11) R.L. Kemp, PLS 22482, Book 16, Page 49 (2003)

**Method of Survey:** GPS observations using Topcon Hyper-RTK receivers and closed loop field traverses using a Topcon GTS-220 (00070057) total station. This survey meets or exceeds precision requirements as set forth in WAC 332-130-090

**Record of Survey Description (Original parcel):** The lands contained in this segregation survey are as described the following deets:

- 1) Bergain & Sale Deed "Meyerhouser Company to Simpson Timber Company & EPC Holdings XXXIV, LLC" A/N 3044845 (2001)
- 2) Bergain & Sale Deed "Meyerhouser Company to EPC Holdings XXXIV, LLC" A/N 3048208 (2002)
- 3) Bergain & Sale Deed "EPC Holdings XXXIV, LLC to Simpson Resources Company" A/N 3060780 (2003)

**Certificate Number: 3151017**  
 Filed for record this 10th day of Dec 2011 at 4:55PM, in Book 24 of Surveys at Page 104107  
 At the request of Butler Surveying, Incorporated  
 PATT CAROLAN W. CARROLL  
 County Auditor

**Surveyor's Certificate**  
 This map correctly represents a survey made by me or under my direction in compliance with the requirements of the Survey Recording Act of the State of Washington, as amended, in December, 2011.

Christopher M. Butler, PLS 36792  
 12-16-11  
 date

**BUTLER SURVEYING INC.**  
 472 N. CHESTER AVENUE  
 P.O. BOX 140, CHESTER, VA 24632  
 800.774.8600

**Butler's Certification:**  
 All taxes listed against the parcels included in this Segregation Survey have been paid to and including the year 2011.

**Substantive, Inc.** 12/16/2011  
 Date  
 Pacific County Treasurer

