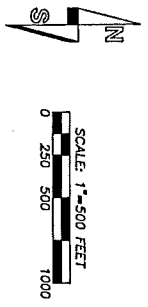


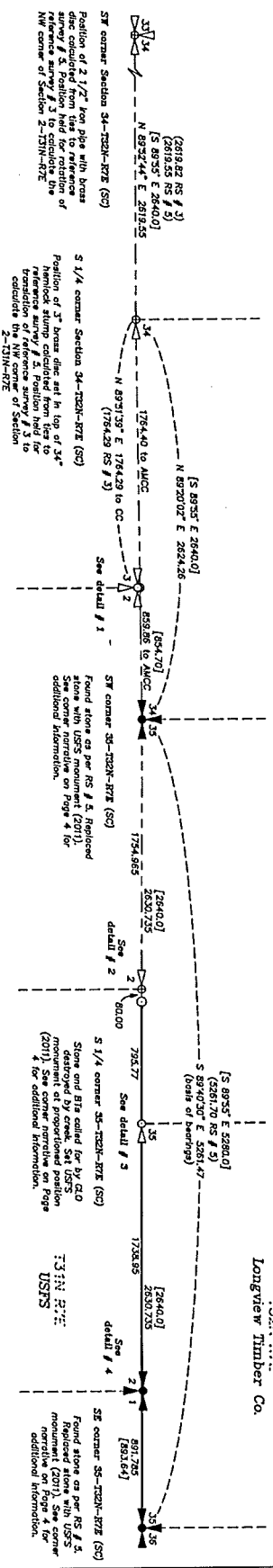
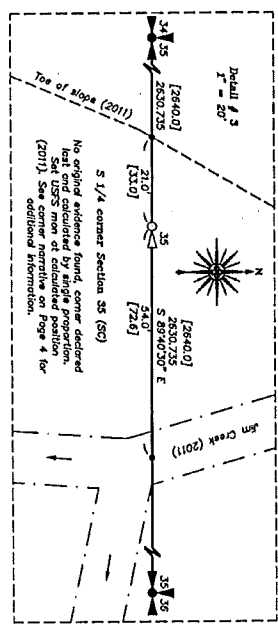
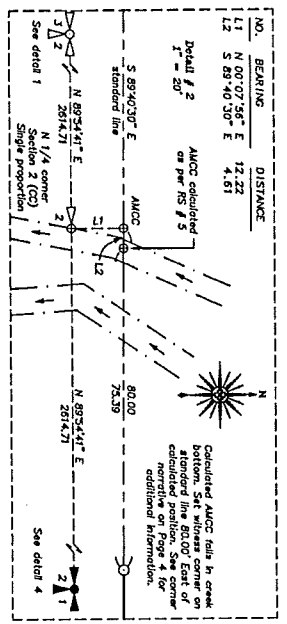
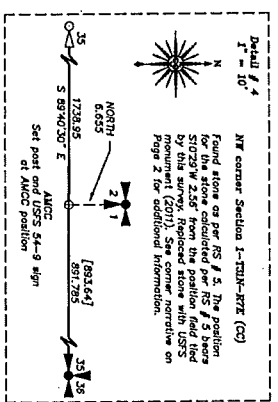
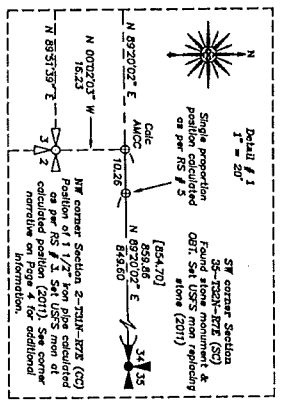
A dependent resurvey of the east line of Section 25, the east and south lines of Section 36 and a portion of the 7 south line of Section 35, all in Township 32 North, Range 7 East, W.M. in Snohomish County, Washington. (Page 1 of 4 Pages)



Basis of bearings: The bearings are derived from line to the southeast and southwest corners of Section 35 as shown on Record of Survey recorded under Auditor's File Number 200509215004, Records of Snohomish County, Washington.

- Found corner as noted
- Set 3/4" aluminum drive stake with 3" aluminum USFS stamped per the BLM manual.
- ⊙ Calculated position
- ⊖ Bizarre, pointed & posted property line
- [ ] GLO bearing or distance

Reference surveys:  
 1) GLO survey of the east and south boundaries of T32N R7E by Campbell, et al under contract No. 536 (1986) RTE by Hubbard under Grant No. 5 (1911).  
 2) Property boundary survey and monumentation of the Jim Creek-Hood Station from the R32E to Olympic, WA, of Survey Page 162 (1984).  
 3) W.L. Lord, PLS 19631, AFN 200509215004 (2005).  
 4) J.L. Franklin, PLS 37222, AFN 200904285001 (2009).  
 Method of survey: Closed loop field traverse using a Topcon GTS-220 (0200057) total station. This survey meets or exceeds precision requirements as set forth in WAC 332-130-090.



Filed for record this 12th day of September 2011 at 2:31 P.M. under AFN 201109125001 At the request of Butler Surveying, Incorporated

Record of survey description  
 The east line of Section 25, the east and south lines of Section 36 and a portion of the south line of Section 35, all in Township 32 North, Range 7 East, W.M. in Snohomish County, Washington.

Surveyor's Certificate  
 This map correctly represents a survey made by me or under my direction in conformance with the requirements of the Survey Recording Act as the request of Longview Timber Co. and USFS in August of 2011.

County Auditor *Christopher M. Butler* Deputy Auditor

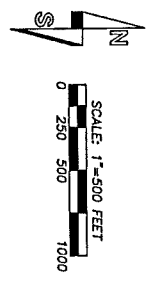
*Christopher M. Butler* PLS 36792



**BUTLER SURVEYING INC.**  
 478 NW CHELSEA AVENUE  
 P.O. BOX 149, CHELSEA, VA 98832  
 360/748-8803

Drawn C. Butler Date 9-8-11  
 Checked *CS* Job No. 11-39  
 Scale 1" = 500' Sheet 1 of 4

A dependent resurvey of the east line of Section 25, the east and south lines of Section 35 and a portion of the south line of Section 35, all in Township 32 North, Range 7 East, W.M. in Snohomish County, Washington.  
(Page 2 of 4 Pages)



Basis of bearings: The bearings as derived from tie to the southeast and southwest corners of Section 35 as shown on Record of Survey recorded under Auditor File Number 200502515004, Records of Snohomish County, Washington.

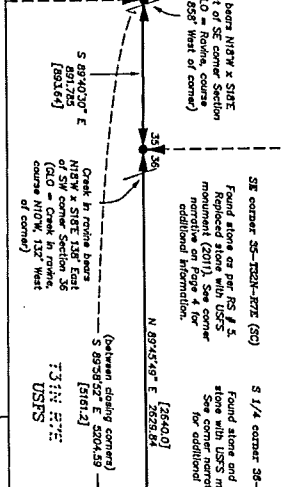
- Found corner as noted
- Set 3/4" aluminum drive shaft with 3" aluminum USFS
- ⊕ Calculated position
- ⊖ Bored, pointed & posted property line
- [ ] GLO bearing or distance

Reference surveys:  
 1) GLO survey of the east and south boundaries of T32N R2E by Campbell, et al  
 2) GLO subdivision survey of T32N R2E by Hubbed under Group No. 5 (1911).  
 3) Property boundary survey and monumentation of the Jim Creek-Nord Station by Rueland Fisher & Associates dated May 1989, a copy of which was obtained from the Surveyor General's Office.  
 4) R.B. Hunt, P.S. 15655, Book 19 of Surveys, Page 162 (1984)  
 5) W.L. Lloyd, P.S. 15651, A.S.N. 200502515004 (2005)  
 6) J.L. Franklin, P.S. 37327, A.S.N. 200502428001 (2009)  
 Method of survey: Closed loop field traverse using a Topcon GTS-220 (0000005) total station. This survey meets or exceeds precision requirements as set forth in WAC 335-130-090.

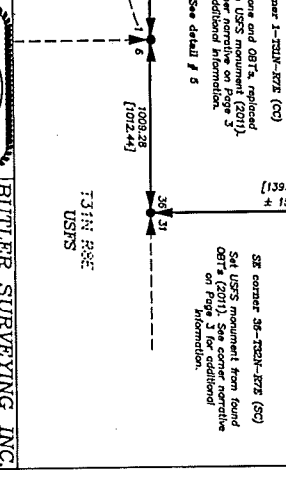
NE corner Section 2-T32N-R2E (CO)  
 Found quartz stone with oak & 1.5 19531 marker in top & guard  
 (2011). Removed stone and set a 3/4" aluminum drive and end 3" aluminum cap stamped as shown, set stone adjacent to new monument.  
 Found accessories:  
 Decayed 30" fir stump with spike in face of base S89E 6.50' (Not GLO)  
 Decayed 14" hemlock stump with visible spike and spike in face of base S19W 22.90' (GLO 14" hemlock S14W 21.12')  
 (GLO 12" white fir S33E 21.07' in gage)  
 New accessories (distances measured to new 40d spikes):  
 14" double hemlock S39W 8.30' angled T32N R2E S2 BT with 40d spike in center side, OBT top and USFS 54-9 sign facing corner.  
 13" hemlock S34E 12.48' angled T32N R2E S1 BT with 40d spike in center side, OBT top and USFS 54-9 sign facing corner.  
 Set aluminum post with USFS 54-9 sign 6.66' South of corner at A.M.C.C. position.  
 Found route bearing N18W x SIDE 31' East of corner



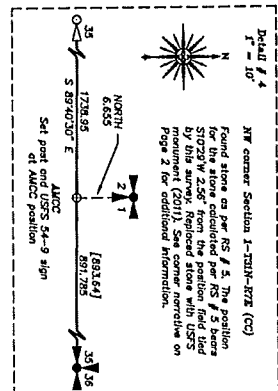
SE corner Section 35-T32N-R2E (CO)  
 Found iron nail in top center and a square cedar guard post (2011). Removed stone and set a 3/4" aluminum drive rod and 3" aluminum cap stamped as shown, set stone adjacent to new monument.  
 Found accessories:  
 Decayed 30" fir stump with spike in face of base S89E 6.50' (Not GLO)  
 Decayed 14" hemlock stump with visible spike and spike in face of base S19W 22.90' (GLO 14" hemlock S14W 21.12')  
 (GLO 12" white fir S33E 21.07' in gage)  
 New accessories (distances measured to new 40d spikes):  
 14" double hemlock S39W 8.30' angled T32N R2E S2 BT with 40d spike in center side, OBT top and USFS 54-9 sign facing corner.  
 13" hemlock S34E 12.48' angled T32N R2E S1 BT with 40d spike in center side, OBT top and USFS 54-9 sign facing corner.  
 Set aluminum post with USFS 54-9 sign 6.66' South of corner at A.M.C.C. position.  
 Found route bearing N18W x SIDE 31' East of corner



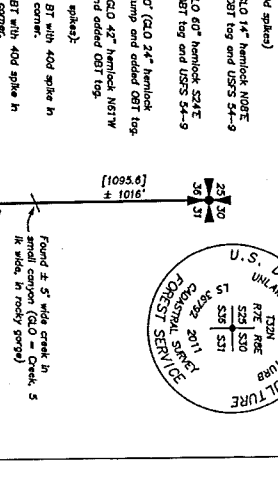
SE corner Section 35-T32N-R2E (CO)  
 Found iron nail in top center and a square cedar guard post (2011). Removed stone and set a 3/4" aluminum drive rod and 3" aluminum cap stamped as shown, set stone adjacent to new monument.  
 Found accessories:  
 Decayed 30" fir stump with spike in face of base S89E 6.50' (Not GLO)  
 Decayed 14" hemlock stump with visible spike and spike in face of base S19W 22.90' (GLO 14" hemlock S14W 21.12')  
 (GLO 12" white fir S33E 21.07' in gage)  
 New accessories (distances measured to new 40d spikes):  
 14" double hemlock S39W 8.30' angled T32N R2E S2 BT with 40d spike in center side, OBT top and USFS 54-9 sign facing corner.  
 13" hemlock S34E 12.48' angled T32N R2E S1 BT with 40d spike in center side, OBT top and USFS 54-9 sign facing corner.  
 Set aluminum post with USFS 54-9 sign 6.66' South of corner at A.M.C.C. position.  
 Found route bearing N18W x SIDE 31' East of corner



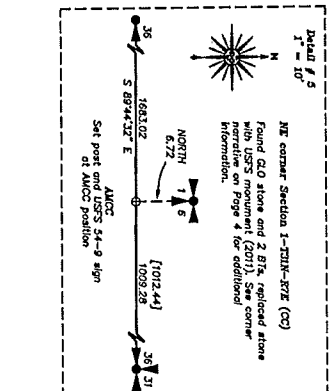
SW corner Section 36-T32N-R2E (CO)  
 Found iron nail in top center and a square cedar guard post (2011). Removed stone and set a 3/4" aluminum drive rod and 3" aluminum cap stamped as shown, set stone adjacent to new monument.  
 Found accessories:  
 Decayed 30" fir stump with spike in face of base S89E 6.50' (Not GLO)  
 Decayed 14" hemlock stump with visible spike and spike in face of base S19W 22.90' (GLO 14" hemlock S14W 21.12')  
 (GLO 12" white fir S33E 21.07' in gage)  
 New accessories (distances measured to new 40d spikes):  
 14" double hemlock S39W 8.30' angled T32N R2E S2 BT with 40d spike in center side, OBT top and USFS 54-9 sign facing corner.  
 13" hemlock S34E 12.48' angled T32N R2E S1 BT with 40d spike in center side, OBT top and USFS 54-9 sign facing corner.  
 Set aluminum post with USFS 54-9 sign 6.66' South of corner at A.M.C.C. position.  
 Found route bearing N18W x SIDE 31' East of corner



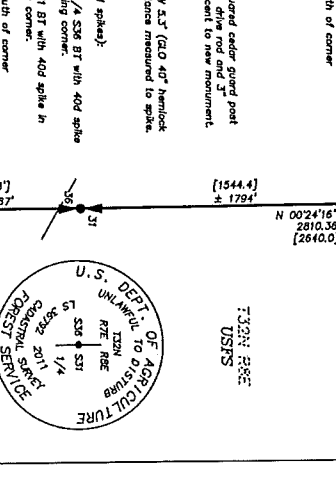
NW corner Section 1-T32N-R2E (CO)  
 Found stone on top of RS # 4. The spikeline from the stone to the A.M.C.C. position is 51023W 2.56' from the portion field find by this survey. Replaced stone with USFS monument (2011). See corner narrative on Page 4 for additional information.  
 Set post end USFS 54-9 sign at A.M.C.C. position



E 1/4 corner Section 36-T32N-R2E  
 Found iron nail in top center and a square cedar guard post (2011). Removed stone and set a 3/4" aluminum drive rod and 3" aluminum cap stamped as shown, set stone adjacent to new monument.  
 Found accessories:  
 Decayed 30" fir stump with spike in face of base S89E 6.50' (Not GLO)  
 Decayed 14" hemlock stump with visible spike and spike in face of base S19W 22.90' (GLO 14" hemlock S14W 21.12')  
 (GLO 12" white fir S33E 21.07' in gage)  
 New accessories (distances measured to new 40d spikes):  
 14" double hemlock S39W 8.30' angled T32N R2E S2 BT with 40d spike in center side, OBT top and USFS 54-9 sign facing corner.  
 13" hemlock S34E 12.48' angled T32N R2E S1 BT with 40d spike in center side, OBT top and USFS 54-9 sign facing corner.  
 Set aluminum post with USFS 54-9 sign 6.66' South of corner at A.M.C.C. position.  
 Found route bearing N18W x SIDE 31' East of corner



NE corner Section 1-T32N-R2E (CO)  
 Found iron nail in top center and a square cedar guard post (2011). Removed stone and set a 3/4" aluminum drive rod and 3" aluminum cap stamped as shown, set stone adjacent to new monument.  
 Found accessories:  
 Decayed 30" fir stump with spike in face of base S89E 6.50' (Not GLO)  
 Decayed 14" hemlock stump with visible spike and spike in face of base S19W 22.90' (GLO 14" hemlock S14W 21.12')  
 (GLO 12" white fir S33E 21.07' in gage)  
 New accessories (distances measured to new 40d spikes):  
 14" double hemlock S39W 8.30' angled T32N R2E S2 BT with 40d spike in center side, OBT top and USFS 54-9 sign facing corner.  
 13" hemlock S34E 12.48' angled T32N R2E S1 BT with 40d spike in center side, OBT top and USFS 54-9 sign facing corner.  
 Set aluminum post with USFS 54-9 sign 6.66' South of corner at A.M.C.C. position.  
 Found route bearing N18W x SIDE 31' East of corner



SW corner Section 36-T32N-R2E (CO)  
 Found iron nail in top center and a square cedar guard post (2011). Removed stone and set a 3/4" aluminum drive rod and 3" aluminum cap stamped as shown, set stone adjacent to new monument.  
 Found accessories:  
 Decayed 30" fir stump with spike in face of base S89E 6.50' (Not GLO)  
 Decayed 14" hemlock stump with visible spike and spike in face of base S19W 22.90' (GLO 14" hemlock S14W 21.12')  
 (GLO 12" white fir S33E 21.07' in gage)  
 New accessories (distances measured to new 40d spikes):  
 14" double hemlock S39W 8.30' angled T32N R2E S2 BT with 40d spike in center side, OBT top and USFS 54-9 sign facing corner.  
 13" hemlock S34E 12.48' angled T32N R2E S1 BT with 40d spike in center side, OBT top and USFS 54-9 sign facing corner.  
 Set aluminum post with USFS 54-9 sign 6.66' South of corner at A.M.C.C. position.  
 Found route bearing N18W x SIDE 31' East of corner

Filed for record this \_\_\_\_\_ day of \_\_\_\_\_ 20\_\_\_\_  
 at \_\_\_\_\_ M. under AFN \_\_\_\_\_  
 At the request of Butler Surveying, Incorporated  
 County Auditor \_\_\_\_\_ Deputy Auditor \_\_\_\_\_

Author's Certificate  
 I, \_\_\_\_\_, Surveyor, do hereby certify that this map is a true and correct copy of the original map as filed for record in the office of the County Auditor of Snohomish County, Washington, on this \_\_\_\_\_ day of \_\_\_\_\_, 20\_\_\_\_.

Surveyor's Certificate  
 This map correctly represents a survey made by me or under my direction in conformance with the requirements of the Survey Recording Act of the request of Longview Timber Co. and USFS in August of 2011.

Christopher M. Butler, PLS 56792

Butler Surveying, Incorporated  
 470 NW Cassius Avenue  
 Everett, WA 98202  
 Phone: 425-746-8800  
 Checked by \_\_\_\_\_ Date 9-8-11  
 Job No. 11-39  
 Sheet 2 of 4

Butler Surveying, Incorporated  
 470 NW Cassius Avenue  
 Everett, WA 98202  
 Phone: 425-746-8800  
 Checked by \_\_\_\_\_ Date 9-8-11  
 Job No. 11-39  
 Sheet 2 of 4

Butler Surveying, Incorporated  
 470 NW Cassius Avenue  
 Everett, WA 98202  
 Phone: 425-746-8800  
 Checked by \_\_\_\_\_ Date 9-8-11  
 Job No. 11-39  
 Sheet 2 of 4

Butler Surveying, Incorporated  
 470 NW Cassius Avenue  
 Everett, WA 98202  
 Phone: 425-746-8800  
 Checked by \_\_\_\_\_ Date 9-8-11  
 Job No. 11-39  
 Sheet 2 of 4

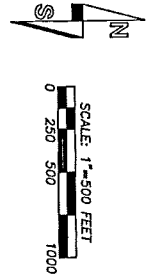
Butler Surveying, Incorporated  
 470 NW Cassius Avenue  
 Everett, WA 98202  
 Phone: 425-746-8800  
 Checked by \_\_\_\_\_ Date 9-8-11  
 Job No. 11-39  
 Sheet 2 of 4

Butler Surveying, Incorporated  
 470 NW Cassius Avenue  
 Everett, WA 98202  
 Phone: 425-746-8800  
 Checked by \_\_\_\_\_ Date 9-8-11  
 Job No. 11-39  
 Sheet 2 of 4

Butler Surveying, Incorporated  
 470 NW Cassius Avenue  
 Everett, WA 98202  
 Phone: 425-746-8800  
 Checked by \_\_\_\_\_ Date 9-8-11  
 Job No. 11-39  
 Sheet 2 of 4

Butler Surveying, Incorporated  
 470 NW Cassius Avenue  
 Everett, WA 98202  
 Phone: 425-746-8800  
 Checked by \_\_\_\_\_ Date 9-8-11  
 Job No. 11-39  
 Sheet 2 of 4

A dependent resurvey of the east line of Section 25, the east and south lines of Section 35 and a portion of the south line of Section 35, all in Township 32 North, Range 7 East, W.M. in Snohomish County, Washington.  
(Page 3 of 4 Pages)



Beats of bearings: True bearings as derived from ties to the southeast and southwest corners of Section 35 as shown on Record of Survey recorded under Auditor's File Number 200509215004, Records of Snohomish County, Washington.

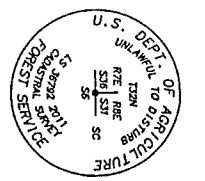
- Found corner as noted
- Set 3/4" aluminum drive shaft with 3" aluminum USFS stamped per the BLM manual.
- ⊖ Calculated position
- Bound, polished & posted property line
- [ ] GLO bearing or distance

Reference survey:  
1) GLO survey of the east and south boundaries of T23N R7E by Campbell, et al  
2) GLO subdivision survey of T23N R7E by Mulford under Group No. 5 (1911).  
3) Property boundary survey and monumentation of the Elm Creek Head Station by Nelson, Fisher & Associates, dated May 1982, a copy of which was obtained from the State of Washington, Department of Ecology.  
4) R.B. Huey, PLS 19833, AEN 200509215004 (2005)  
5) W.L. Lovy, PLS 19831, AEN 200509215004 (2005)  
6) J.L. Franklin, PLS 37267, AEN 2005092485007 (2005)  
Method of survey: Closed loop field traverse using a Topcon GTS-220 (2007/05) total station. This survey meets or exceeds precision requirements as set forth in WAC 352-130-0501.

SS corner Section 34-T23N-R7E (S2)  
Stone monument called for by GLO notes not found. Set a 3/4" aluminum drive shaft with 3" aluminum cap stamped as shown at best fit position derived from four found GRTs (2011).

Found accessories:  
Decayed 30" square stump with visible scribe N32E 65.60' (GLO 36" scribe N32E 64.63') Set 1/2" rebar in top center stump, distance measured to rebar.  
48" hemlock snag with chopped out face S44E 29.70' (GLO 32" hemlock S45E 31.02'). Set 40d spike in center side, 08T tag and USFS 54-9 sign facing corner, distance measured to spike.  
41" hemlock snag with chopped out face S03W 35.04' (GLO 30" hemlock S03W 37.62'). Set 40d spike in center side, 08T tag and USFS 54-9 sign facing corner, distance measured to spike.  
48" hemlock snag with visible scribe N32W 18.48' (GLO 50" hemlock N30W 18.48') Set 40d spike in center side, 08T tag and USFS 54-9 sign facing corner, distance measured to spike.  
New accessories (distances measured to new 40d spikes):  
8" white fir N24W 39.07' arched T23N R7E S3E BT with 40d spike in center side, 08T tag and USFS 54-9 sign facing corner.  
21" hemlock N67E 51.34' arched T23N R6E S3T BT with 40d spike in center side, 08T tag and USFS 54-9 sign facing corner.  
Set aluminum post with USFS 54-9 sign 1.00' North of corner.

Auditor's Certificate  
Filed for record this \_\_\_\_\_ day of \_\_\_\_\_ 20\_\_\_\_  
at \_\_\_\_\_ M. under APLN \_\_\_\_\_  
At the request of Butler Surveying, Incorporated  
County Auditor \_\_\_\_\_ Deputy Auditor \_\_\_\_\_



201019125001

NE corner Section 25-T23N-R7E  
Found standard USFS monument stamped as shown set in 1984 from original evidence and replacing a found pipe by R.B. Huey, PLS on reference survey # 4 (2011).

Found accessories:  
24" hemlock with hollow with old base N40E 21.10' (GLO 20" hemlock N40E 21.12), found by Huey in 1984.  
29" hemlock stump with visible scribe and tag S25W 38.30' (GLO 12" hemlock S25W 38.48') found by Huey in 1984.  
24" hemlock stump with saw cuts S81E 17.20' (GLO 8" hemlock S81E 17.15') found by Huey in 1984.  
(GLO 8" fir N45W 37.62' - gone)  
(GLO 24" hemlock line tree South South 5.90' - gone)

26" hemlock with heaved face and tag N53W 52.3' (Huey RP). Added USFS 54-9 sign 23" hemlock with heaved face and tag N35E 15.6' (Huey RP). Added USFS 54-9 sign 27" hemlock with heaved face and tag S21E 23.6' (Huey RP). Added USFS 54-9 sign New accessories:  
12" hemlock S27W 20.38' arched T23N R7E S3E BT with 40d spike in center side, 08T tag and USFS 54-9 sign facing corner.  
Set aluminum post with USFS 54-9 sign 1.0' South of corner.

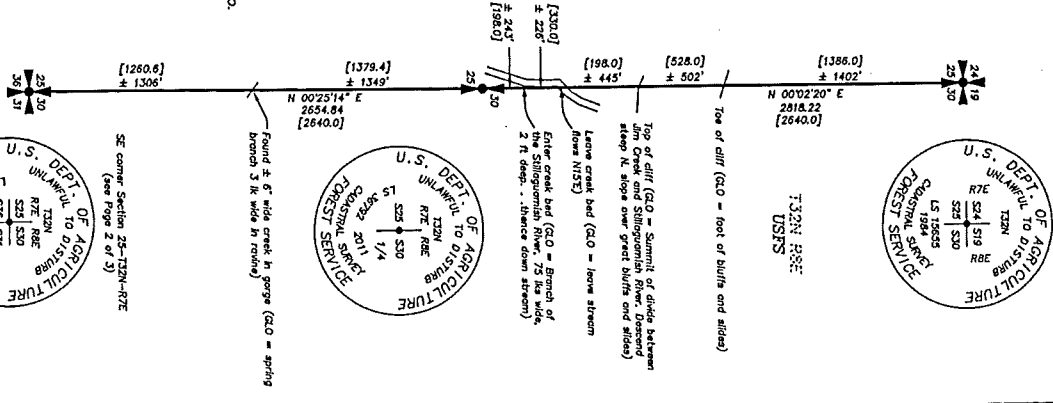
E 1/4 corner Section 25-T23N-R7E  
Found 2" iron pipe with 0.5" visible (2011). No trace of the stone called for by GLO was found. Set a 3/4" aluminum drive shaft with 3" aluminum cap stamped as shown at best fit position derived from four found GRTs (2011).  
Found accessories:  
Decayed 14" hemlock stump with no markings N81E 9.75' (GLO 12" hemlock N81E 9.57'). Set 1/2" rebar in top center stump, distance measured to rebar.  
48" hemlock snag with old face N65W 14.46' (GLO 28" hemlock N67W 13.86'). Set 40d spike in center side and added 08T tag and USFS 54-9 sign facing corner. Distance measured to spike.  
New accessories (distances measured to new 40d spikes):  
7" white fir N24W 27.35' arched T23N R7E 1/4 S2S BT with 40d spike in center side, 08T tag and USFS 54-9 sign facing corner.  
11" hemlock N32E 21.20' arched T23N R6E 1/4 S30 BT with 40d spike in center side, 08T tag and USFS 54-9 sign facing corner.  
Set aluminum post with USFS 54-9 sign 1.0' North of corner.

NE corner Section 1-T23N-R7E (C2)  
Found granite stone with X scribed in top and 5 notches on west face (2011). Removed stone and set a 3/4" aluminum drive shaft with 3" aluminum cap stamped as shown at best fit position derived from four found GRTs (2011).  
Found accessories:  
13" fir stump with visible scribe S22E 36.45' (GLO 12" white fir S28E 41.58'). Set 1/2" rebar in top center stump, distance measured to rebar.  
33" live white fir with heaved face S48W 37.22' (GLO 14" white fir S53W 37.62'). Set 40d spike in center side, 08T tag and USFS 54-9 sign facing corner, distance measured to spike.  
New accessories (distances measured to new 40d spikes):  
5" white fir S24E 29.27' arched T23N R6E SS BT with 40d spike in center side, 08T tag and USFS 54-9 sign facing corner.  
Set aluminum post with USFS 54-9 sign 6.7Z South of corner of ADCC position.



T23N R7E  
Langview Timber Co.

Surveyor's Certificate  
This map correctly represents a survey made by me or under my direction in conformance with the requirements of the Survey Recording Act of the State of Washington, and USFS in August of 2011.  
Christopher M. Butler, PLS 36792



Butler Surveying, Inc.  
475 N. CERRILUS AVENUE  
P.O. BOX 140, CERRILUS, WA 98532  
509-746-0603  
Drawn C. Butler  
Checked CS  
Date 9-8-11  
Job No. 11-39  
Scale 1" = 500'  
Sheet 3 of 4

A dependent resurvey of the east line of Section 25, the east and south lines of Section 36 and a portion of the south line of Section 35, all in Township 32 North, Range 7 East, W.M. in Snohomish County, Washington.  
(Page 4 of 4 Pages)

**NE corner Section 2-121N-R7E (S2)**

Position of 1 1/2" iron pipe found and accepted by Rulon Palmer & Associates in 1989 on their survey for the USFS Timber Sale 54-9. Station on SW corner of Section 2-121N-R7E as depicted on said survey. No evidence of the pipe or any B.T.s was found at the position due to the existence of a rock pit to the north of the station. The station is located on the east side of the road. The station is a 1/2" diameter pipe with a 3/4" aluminum cap stamped as shown at the station. Set a 3/4" aluminum drive rod and 3" aluminum cap stamped as shown at the position (2011).

New accessories (distances measured to new 40d spike):

- 11" hemlock S20W 12.12' arched 123N R7E S3 BT with 40d spike in center side and aluminum Longview Timber log facing corner.
- 7" hemlock S29E 18.45' arched 123N R7E S2 BT with 40d spike in center side and aluminum Longview Timber log facing corner.
- Set 1" post 1.0' East of corner.

**SW corner Section 36-123N-R7E (S2)**

Found boreal stone with "X" in top center, notches on west side and 2" guard pipe as per reference survey # 5 (2011). Removed stone and set a 3/4" aluminum drive rod and 3" aluminum cap stamped as shown, set stone adjacent to new monument.

Found accessories:

- 26" hem. stump with visible scribble N12E 18.45' (G.O. 14" hemlock N10E 15.81'), Set 1/2" rebar in top center stump, distance measured to rebar.
- 31" hemlock stump with old face S42E 21.50' (G.O. 20" hemlock S42E 19.14'), Set 1/2" rebar in top center stump, distance measured to rebar.
- 25" hemlock stump with old face S11W 18.33' (G.O. 24" hemlock S11W 17.82'), Set 1/2" rebar in top center stump, distance measured to rebar.
- (G.O. 20" hemlock N60W 11.88' gone)

Reference survey # 3 depicts this corner to be on "existing 1" iron pipe, no B.T.s. The calculated position for said pipe shows a 52.5W 60.52' from the found stone. We searched for said pipe on the 10th and 11th days.

New accessories (distances measured to new 40d spike):

- 16" hemlock N44W 24.81' arched 123N R7E S34 BT with 40d spike in center side and aluminum Longview Timber log facing corner.
- 17" cedar N82E 26.33' arched 123N R7E S35 BT with 40d spike in center side and aluminum Longview Timber log facing corner.
- Set 1" post 1.0' West of corner.

**N 1/4 corner Section 2-121N-R7E (AMCC)**

Position established by single proportion, not set. The calculated position of the AMCC N 1/4 corner of Section 2 is in the corner of a roadway to Jim Creek. This survey will be a 3/4" aluminum drive rod and 3" aluminum cap stamped as shown at the calculated position. Distance of 80.00 feet from the calculated position.

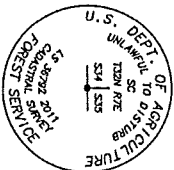
New accessories (distances measured to new 40d spike):

- 13" cedar S30E 2.53' arched 123N R7E 1/4 S2 MC BT with 40d spike in center side and OBT log and USFS 54-9 sign facing corner.
- 10" willow N27W 13.71' arched 123N R7E 1/4 S2 MC BT with 40d spike in center side and OBT log and USFS 54-9 sign facing corner.
- Set aluminum post with USFS 54-9 sign 1.0' West of corner.

**Auditor's Certificate**

Filed for record this \_\_\_\_\_ day of \_\_\_\_\_ 20\_\_\_\_  
at \_\_\_\_\_ M. under AFN \_\_\_\_\_  
At the request of Butler Surveying, Incorporated

County Auditor \_\_\_\_\_ Deputy Auditor \_\_\_\_\_



**S 1/4 corner Section 36-123N-R7E (S2)**

No original evidence found, corner declared lost and calculated by single proportion from the corner monument and 3" aluminum cap stamped as shown at the calculated position (2011).

New accessories (distances measured to new 40d spike):

- 16" cedar N25W 40.01' arched 123N R7E 1/4 S35 BT with 40d spike in center side and OBT log and USFS 54-9 sign facing corner.
- 16" cedar S77W 58.12' arched 123N R7E 1/4 S35 BT with 40d spike in center side and OBT log and USFS 54-9 sign facing corner.
- Set aluminum post with USFS 54-9 sign 1.0' West of corner.

**SW corner Section 36-123N-R7E (S2)**

Found sandstone with possible "X" in top (2011). Unable to remove the stone, set a 3/4" aluminum drive rod and 3" aluminum cap stamped as shown directly against the West face of the stone and above the "X".

Found accessories:

- 14" post stump with old face N02E 10.31' (G.O. 24" hemlock N02E 10.53') Set 1/2" rebar in top center stump, distance measured to rebar.
- 31" spruce stump with visible scribble N02W 13.15' (G.O. 30" spruce N02W 11.22') Set 1/2" rebar in top center stump, distance measured to rebar.
- 17" hemlock stump N81E 18.60' (G.O. 24" hemlock S01E 20.45') Set 40d spike in center side stump, distance measured to spike.
- 18" hem. stump with old face S17W 32.84' (G.O. 16" hemlock S10W 35.89') Set 40d spike in center side stump, distance measured to spike.

New accessories (distances measured to new 40d spike):

- 10" hemlock N78W 17.05' arched 123N R7E S35 BT with 40d spike in center side and OBT log and USFS 54-9 sign facing corner.
- 17" hemlock N71E 11.95' arched 123N R7E S36 BT with 40d spike in center side and OBT log and USFS 54-9 sign facing corner.
- Set aluminum post with USFS 54-9 sign 1.0' East of corner.

**S 1/4 corner Section 36-123N-R7E (S2)**

Found sandstone with no discernible marks (2011). Removed stone and set a 3/4" aluminum drive rod and 3" aluminum cap stamped as shown.

Found accessories:

- 46" hemlock stump with old face N02E 9.18' (G.O. 40" hemlock N10E 7.22') Set 1/2" rebar in top center stump, distance measured to rebar.
- Destroyed 7" larch stump with old face S39E 5.53' (G.O. 10" larch S30E 5.94') Set 1/2" rebar in top center stump, distance measured to rebar.
- Small creek in canyon bearing N60W x S08E East 36' (G.O. = East 13.2 to spring branch bears North)
- New accessories (distances measured to new 40d spike):
- 14" willow N82W 12.25' arched 123N R7E 1/4 S36 BT with 40d spike in center side and OBT log and USFS 54-9 sign facing corner.
- 13" hemlock N31E 32.00' arched 123N R7E 1/4 S36 BT with 40d spike in center side and OBT log and USFS 54-9 sign facing corner.
- Set aluminum post with USFS 54-9 sign 3.0' East of corner.

**Surveyor's Certificate**

This map correctly represents a survey made by me or under my direction in compliance with the requirements of the Surveying Act of the State of Washington, and USFS in August of 2011.

*Christopher M. Butler*

Christopher M. Butler, PLS 36792



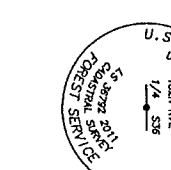
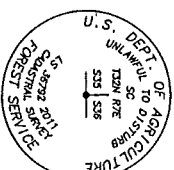
**BUTLER SURVEYING, INC.**

478 HWY 60 EAST  
P.O. BOX 140, CHEHALIS, WA 98532  
360/746-8003

Drawn C. Butler Date 9-8-11

Checked CB Job No. 11-39

Scale 1" = 500' Sheet 4 of 4



201109129B01