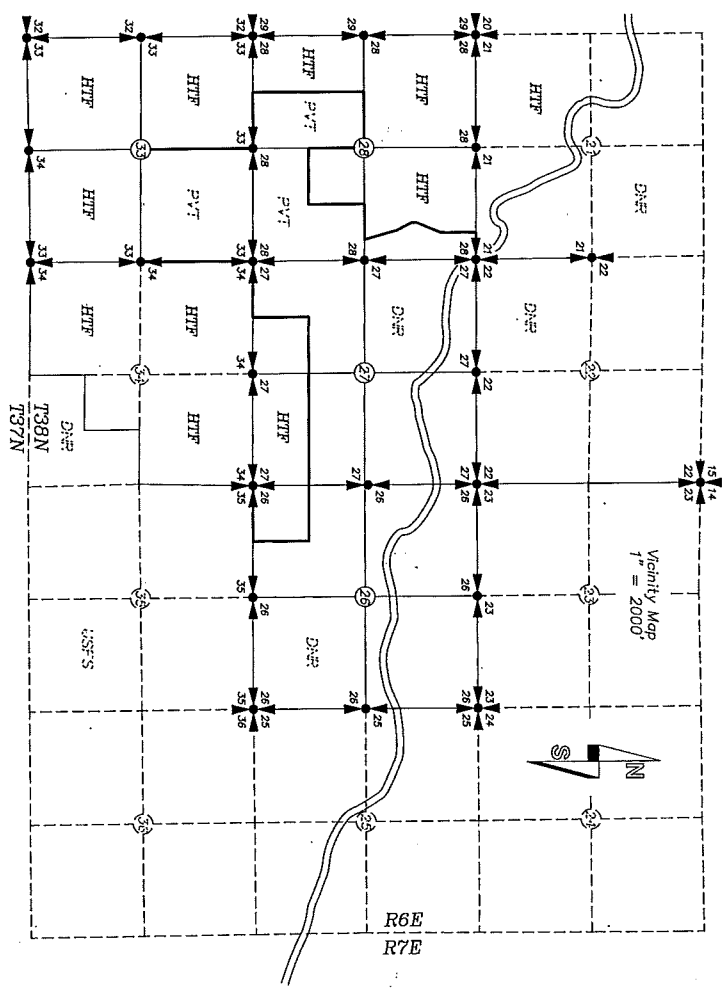


Reference surveys

- 1) Superseeded GLO survey of T38N-R6E by Galbreith and Ober under Contract No. 509 in September and October of 1897.
- 2) GLO resurvey of T38N-R6E by Ralph Ober under Contract No. 509 in June and July of 1905 (Map # 12828) a copy of which was sent to the PLSO in Olympia, WA.
- 3) Unrecorded St. Paul & Tacoma Lumber Co. right of way plat in Section 22--T38N-R6E (Map # 12829) a copy of which was sent to the PLSO in Olympia, WA.
- 4) Unrecorded St. Paul & Tacoma Lumber Co. right of way plat in Section 23--T38N-R6E (Map # 12830) a copy of which was sent to the PLSO in Olympia, WA.
- 5) R.P. Fokkema, PLS 8947, Book 4, Page 120-122 (1977)
- 6) R.E. Zankner, PLS 20899, AFN 1485028 (1983)
- 7) F.F. Poyner, PLS 12716, AFN 951024066 (1995)
- 8) D.M. Demeyer, PLS 21423, AFN 950908110 (1995)
- 9) D.M. Demeyer, PLS 21423, AFN 960705007 (1996)
- 10) D.M. Demeyer, PLS 21423, AFN 2030802541 (2003)
- 11) D.M. Demeyer, PLS 21423, Exhibit of the North-South centerline of Section 33--T38N-R6E a copy of which was obtained from the office of Hampton Tree Farms in Mt. Vernon, WA



Portions of the Southwest Quarter of Section 26, the Southeast and Southwest Quarters of Section 27, the Northeast, Southeast and Southwest Quarters of Section 28 and the Northeast Quarter of Section 33, all in Township 38 North, Range 6 East, W.M. in Whatcom County, Washington. (Page 1 of 6 Pages)

Basis of bearings:

The bearings derived from solar observations near the Northeast corner of Section 27, the South 1/4 corner of Section 28 and the Northeast corner of Section 22, Township 38 North, Range 6 East, W.M.

Method of survey:

Closed loop field traverses using a Topcon GTS-220 (00702057) total station. This survey meets or exceeds precision requirements as set forth in WAC 352-150-090.

Record of Survey Descriptions:

Section 26--T38N-R6E, W.M.
The south, east and north lines of the SW 1/4 of the SW 1/4.

Section 27--T38N-R6E, W.M.
The north line of the South 1/2 of the SE 1/4, the north and west lines of the SE 1/4 of the SW 1/4 and the south line of the SW 1/4 of the SW 1/4.

Section 28--T38N-R6E, W.M.
The west line of the East 1/2 of the SW 1/4, the north and east lines of the NE 1/4 of the SW 1/4, the south and east lines of the NW 1/4 of the SE 1/4, a portion of the north line of the NE 1/4 of the SE 1/4 and the west line of the (following described parcel).

"Beginning at the meander corner between Sections 21 and 28; thence West along the section line between Sections 21 and 28 a distance of 485.8 feet; thence South 843.0 feet; thence South 23 West 587.2 feet; thence South 139.3 feet; thence South 28 East 381.4 feet; thence South 16 East 819.0 feet; thence East 466.0 feet along the quarter line of section 28 to the quarter corner of Sections 27 and 28; thence North along the section line between Sections 27 and 28 a distance of 2369.1 feet to the meander corner between Sections 24 and 31; thence in a Northwesterly direction along the meander line a distance of 310 feet to the Point of Beginning. All in Township 38 North, Range 6 East of W.M. Situate in County of Whatcom, State of Washington.

Section 33--T38N-R6E, W.M.
The east and west lines of the Northeast Quarter



Certificate Number: 20804010220
Filed for record this 3th day of April, 2008
at 2:12 P.M. in Book _____ of Surveys at Page 149
At the request of Butler Surveying, Incorporated
Mindy Steady
Survey Auditor

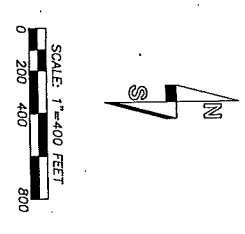
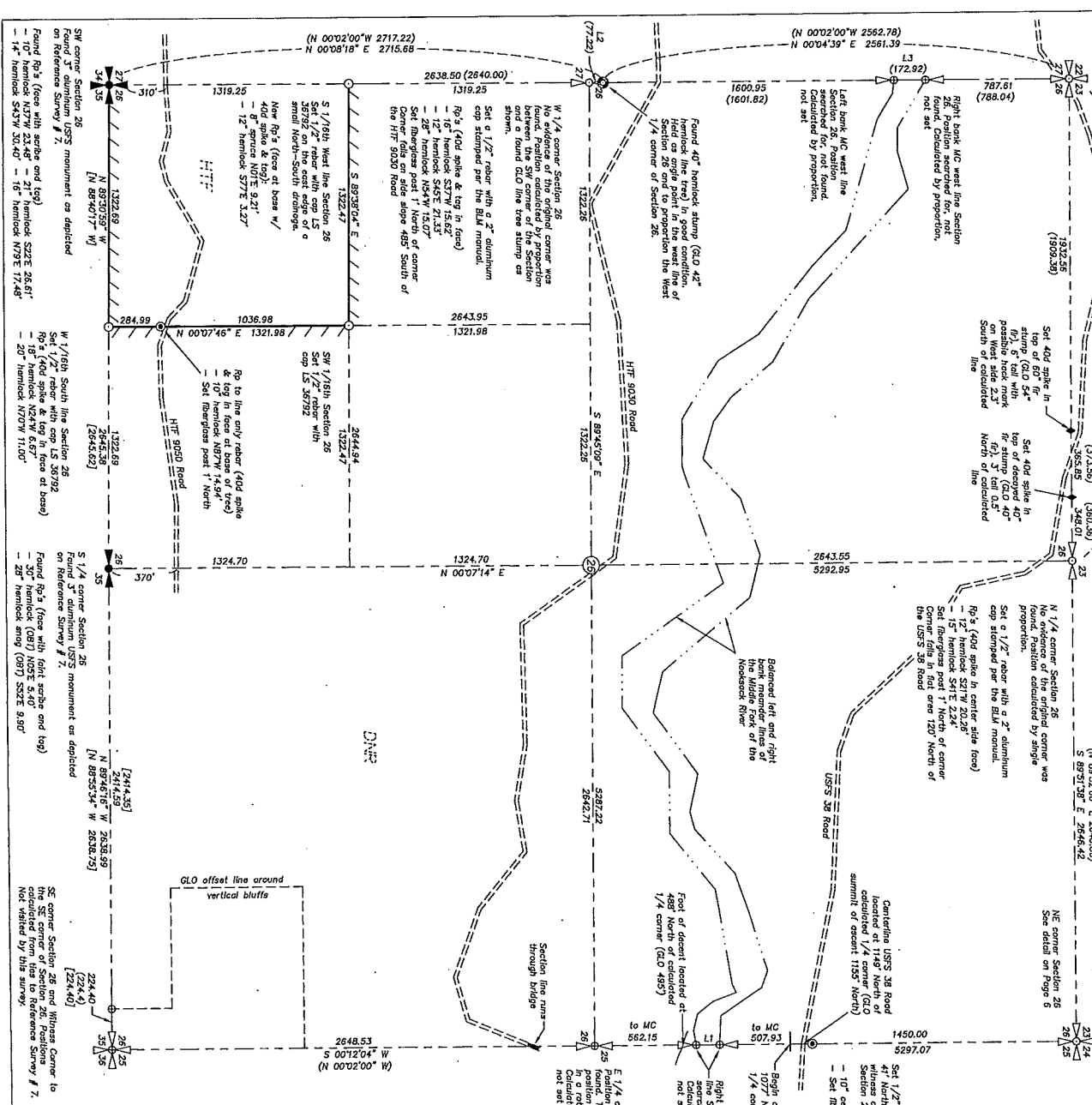
Surveyor's Certificate
This map correctly represents a survey made by me and complies with the requirements of the Survey Recording Act of the request of Hampton Tree Farms in March of 2008.
Christopher M. Butler
Christopher M. Butler, PLS
Certificate No. 36792
3-27-08

BUTLER SURVEYING INC.
475 NW CHELSEA AVENUE
P.O. BOX 148, CHELSEA, WA 98522
360/748-8803

Drawn by	C. Butler	Date	3-28-08
Checked by	CS	Job No.	04-192
Scale	note	Sheet	1 of 6



Portions of Section 26, Township 38 North, Range 6 East, W.M. in Whatcom County, Washington (Page 2 of 6 Pages)



LINE TABLE

NO.	BEARINGS	DISTANCE
L1	S 00°12'04\"	128.45
L2	N 00°08'18\"	177.85
L3	N 00°04'58\"	172.85

- Found corner as noted
- Set 1/2" rebar with cap LS 36792 or 36792 or noted
- Set 1/2" rebar with cap LS 36792 "line only"
- Calculated position
- Found GLO line tree (field for line)
- Found possible GLO line tree (not held for line)
- Blazed and painted property line
- Approximate location of road taken from field traverse control
- () GLO bearing or distance
- [] Other record bearing or distance

BUTLER SURVEYING INC.
 475 NW CHELSEA AVENUE
 P.O. BOX 148 CHELSEA, WA 98826
 360-748-8808

Drawn C. Butler Date 3-28-08
 Checked DB Job No. 04-192
 Scale 1" = 400' Sheet 2 of 6

26864010920

Portions of Section 27, Township 38
North, Range 6 East, W.M.
in Whatcom County, Washington
(Page 3 of 6 Pages)

NW corner Section 27 and
right bank MC west line
are shown as dashed lines
and are not to be
relied upon. See detail on
Page 6

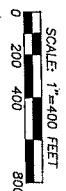
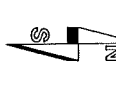
Left bank MC west line
is shown as a dashed line
and is not to be
relied upon. Calculated by
proportion, not set.

Right bank MC east line
is shown as a dashed line
and is not to be
relied upon. Calculated by
proportion, not set.

Left bank MC east line
is shown as a dashed line
and is not to be
relied upon. Calculated by
proportion, not set.

Right bank MC west line
is shown as a dashed line
and is not to be
relied upon. Calculated by
proportion, not set.

Found corner as noted
Set 1/2" rebar with cap LS 36792 or
1/2" rebar with 2" aluminum cap LS
36792 as noted
Set 1/2" rebar with cap LS 36792. "line only"
Calculated position
Found GLO line tree (rod for line)
Found possible GLO line tree (rod held for line)
Bisect and patrolled property line
Approximate location of road taken from field
inverse control
GLO bearing or distance
Other record bearing or distance



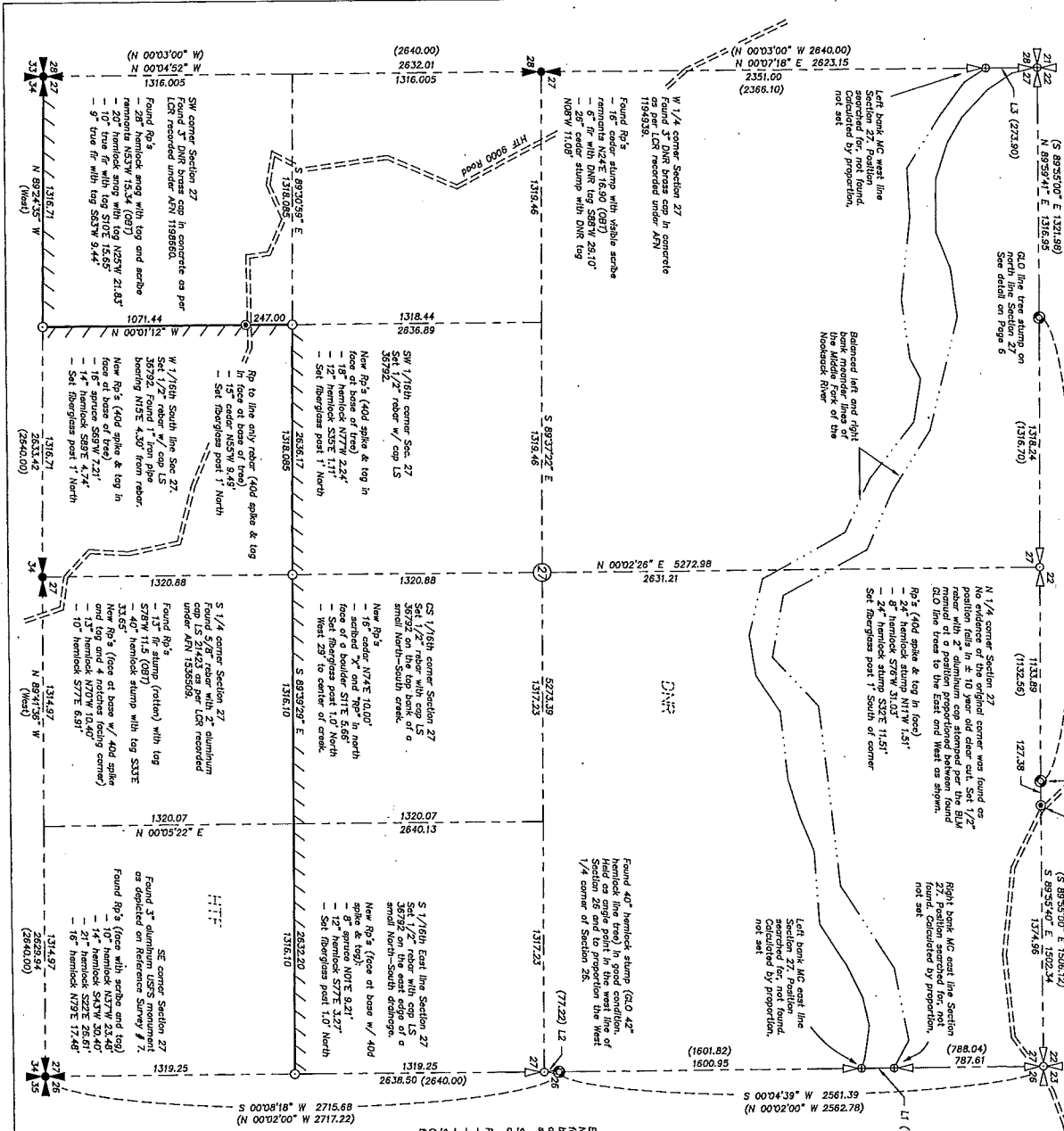
1/4 corner Section 27
No evidence of the original corner was found as
position runs in the 10 year old deed and
evidence of a position proportioned between found
GLO line trees to the East and West as shown.
Rp's (40d spike & tag in face)
- 24" hemlock stump N11W 1.31'
- 8" hemlock 576W 31.03'
Set fiberglass post 1' South of corner

Found 40" hemlock stump (GLO 42"
hemlock line tree) in good condition.
Held as angle point in the west line of
Section 26 and to proportion the West
1/4 corner of Section 26.

1/4 corner Section 27
No evidence of the original corner was found as
position runs in the 10 year old deed and
evidence of a position proportioned between found
GLO line trees to the East and West as shown.
Rp's (40d spike & tag in face)
- 16" hemlock S77W 15.62'
- 12" hemlock S90E 21.35'
Set fiberglass post 1' North

LINE TABLE

NO.	BEARING	DISTANCE
L1	S 00°04'39" W	172.43
L2	S 00°06'18" W	77.18
L3	N 00°07'18" E	272.15

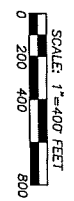


BUTLER SURVEYING INC.
475 NW CHEVALS AVENUE
880/746-8888

Drawn C. Butler
Date 3-28-08
Checked DS
Job No. 04-192
Sheet 3 of 6

2580401620

Portions of Section 28, Township 38 North, Range 6 East, W.M. in Whittom County, Washington (Page 4 of 6 Pages)

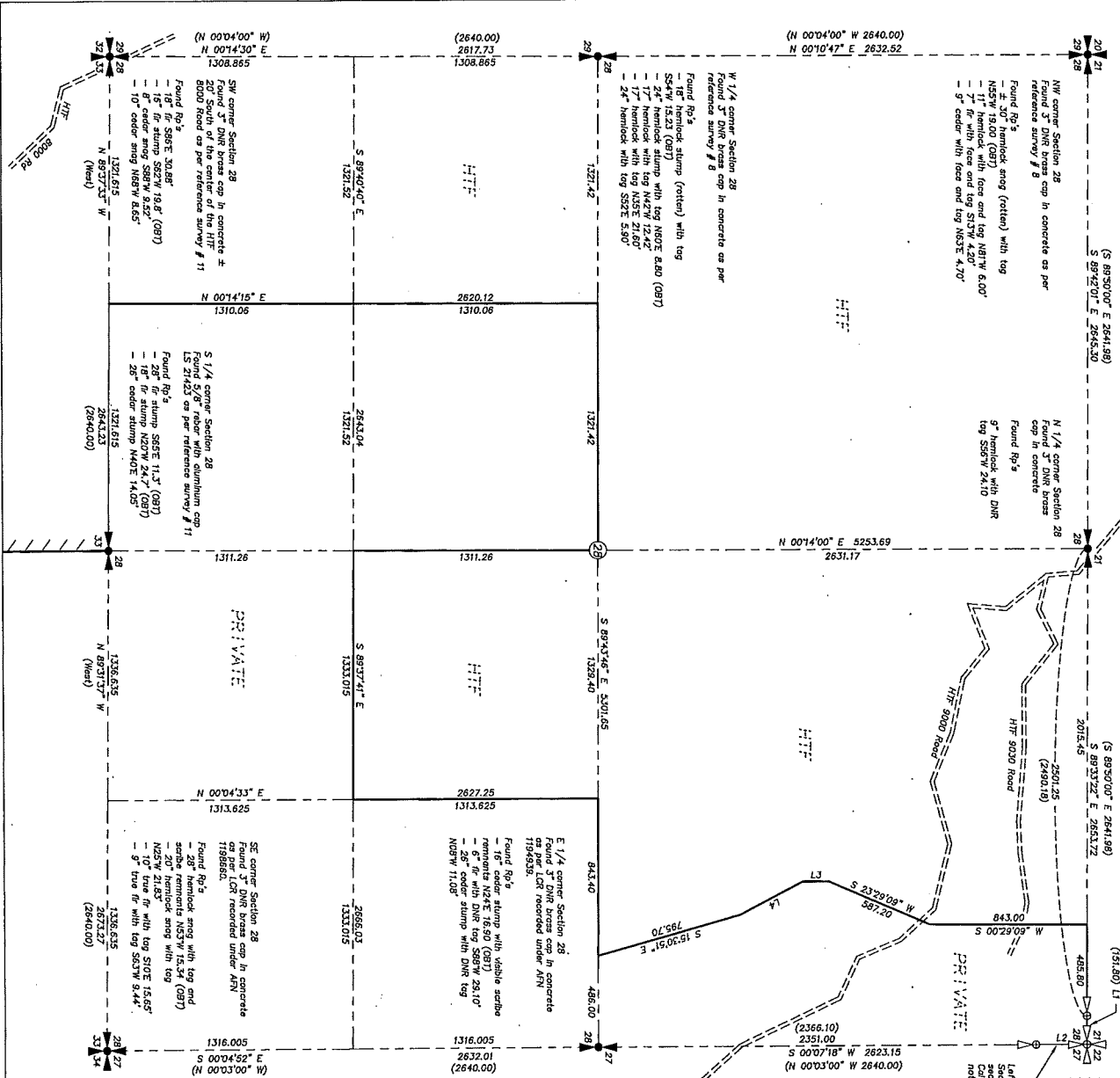


- Found corner as noted
- Set 1/2" rebar with cap LS 35792 or 1/2" rebar with 2" aluminum cap LS 35792 as noted
- ⊙ Set 1/2" rebar with cap LS 35792 "the only"
- ⊖ Calculated position
- Found G.O. line tree (field for line)
- Found possible G.O. line tree (not held for line)
- Blazed and painted property line
- Approximate location of road taken from field traverse control.
- () G.O. bearing or distance
- [] Other record bearing or distance

LINE TABLE

NO.	BEARINGS	DISTANCE
L1	S 89°33'21" E	152.47
L2	S 00°07'18" W	272.15
L3	S 27°30'51" E	381.40

NOTE: The interior property corners and lines shown hereon have not been set and marked at the recording of this survey. This page is being recorded as it affects other pages in the case where the survey has been completed a supplemental Record of Survey will be filed.

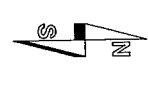
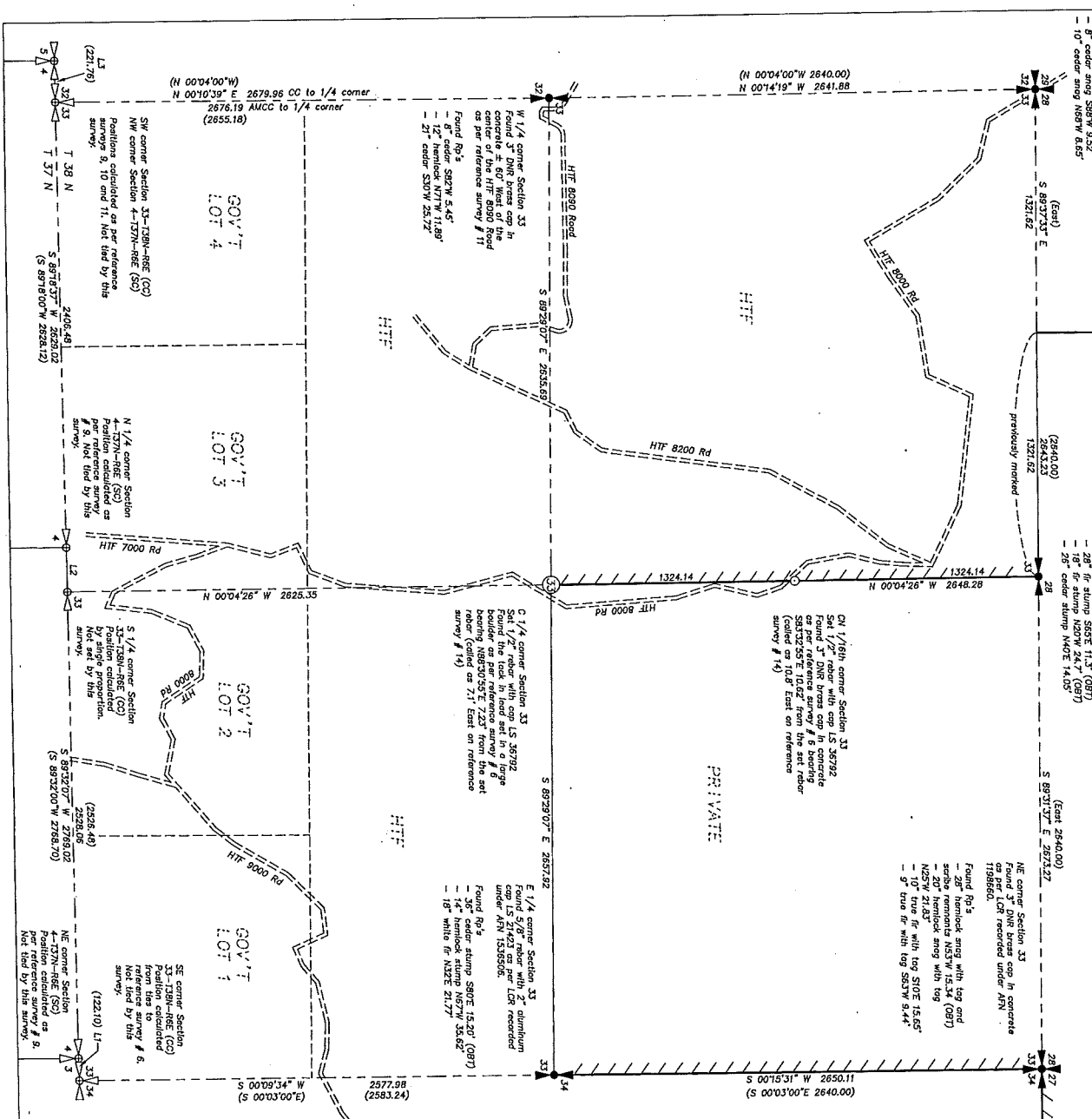


BUTLER SURVEYING INC.
 426 N.W. CHESTER AVE. #100
 P.O. BOX 148 CHESTER, VA 26032
 800/748-8905

Drawn C. Butler Date 3-28-08
 Checked BS Job No. 04-192
 Scale 1" = 400' Sheet 4 of 6

2080401020

Portions of Section 33, Township 38
North, Range 6 East, W.M.
in Whatcom County, Washington
(Page 5 of 6 Pages)



- Found corner as noted
- Set 1/2" rebar with cap LS 36792 or 1/2" rebar with Z" aluminum cap LS 36792 as noted
- ⊙ Set 1/2" rebar with cap LS 36792 "Tie only"
- ⊖ Calculated position
- ◆ Found QLD line tree (not tied for line)
- ▲ Found possible QLD line tree (not tied for line)
- ==== Blazed and painted property line
- Approximate location of road taken from field traverse control.
- () QLD bearing or distance
- [] Other record bearing or distance

LINE TABLE

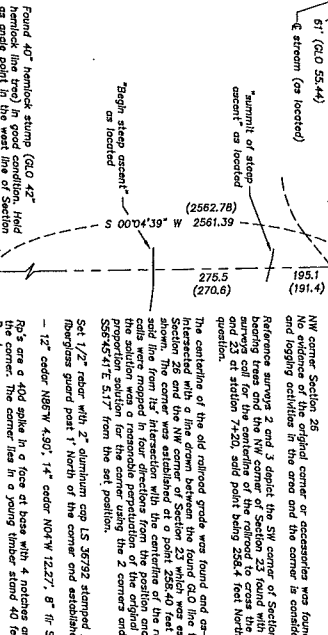
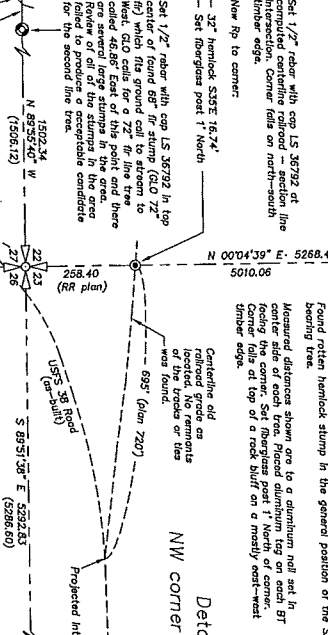
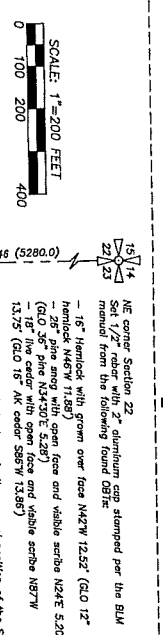
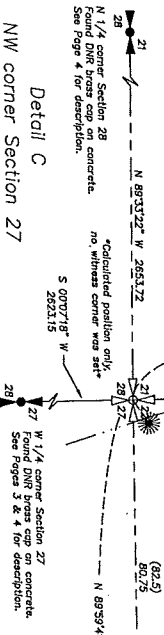
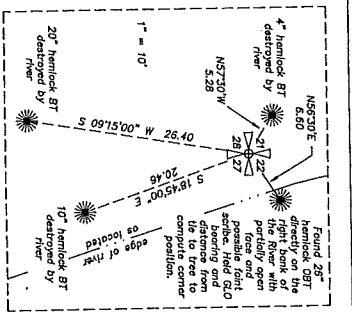
NO.	BEARINGS	DISTANCE
L1	S 89°33'44" W	118.37
L2	S 89°33'44" W	222.54
L3	S 89°16'37" W	222.54

BUTLER SURVEYING INC.
426 NW CHESTNUT AVENUE
P.O. BOX 148, CHESTNUT, WA 98832
360/748-9803

Drawn C. Butler Date 3-28-08
Checked DB Job No. 04-192
Scale 1" = 400' Sheet 5 of 6

2086401920

Details and Diagrams
Portions of Sections 21, 22, 26, 27 & 28
Township 38 North, Range 6 East, W.M.
In Whatcom County, Washington
(Page 6 of 6 Pages)



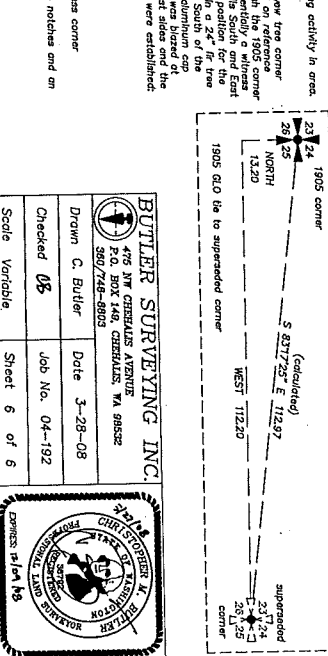
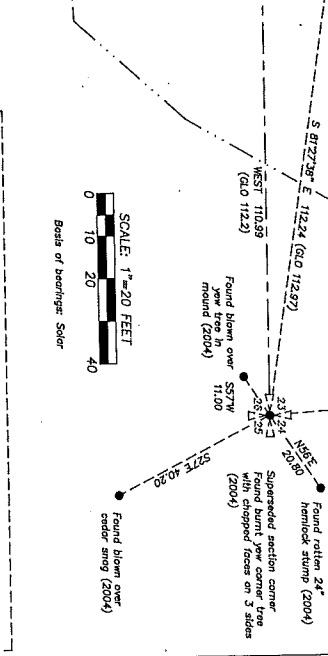
Found 1/4\"/>

Found 60' cedar stump (GLO 54-...), 6\"/>

Found 32' hemlock stump (GLO 55-44), 32' fir stump (GLO 55-44), 32' fir stump (GLO 55-44).

Found 1/2\"/>

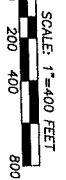
Found 40' hemlock stump (GLO 47-...), 40' fir stump (GLO 47-...).



Butler Surveying Inc. 496 JIM CHEWALS AVENUE, P.O. BOX 148, CHEWALS, WA 98932. Includes a seal for the State of Washington and a table with 'Checked' and 'Scale' fields.

2091100064

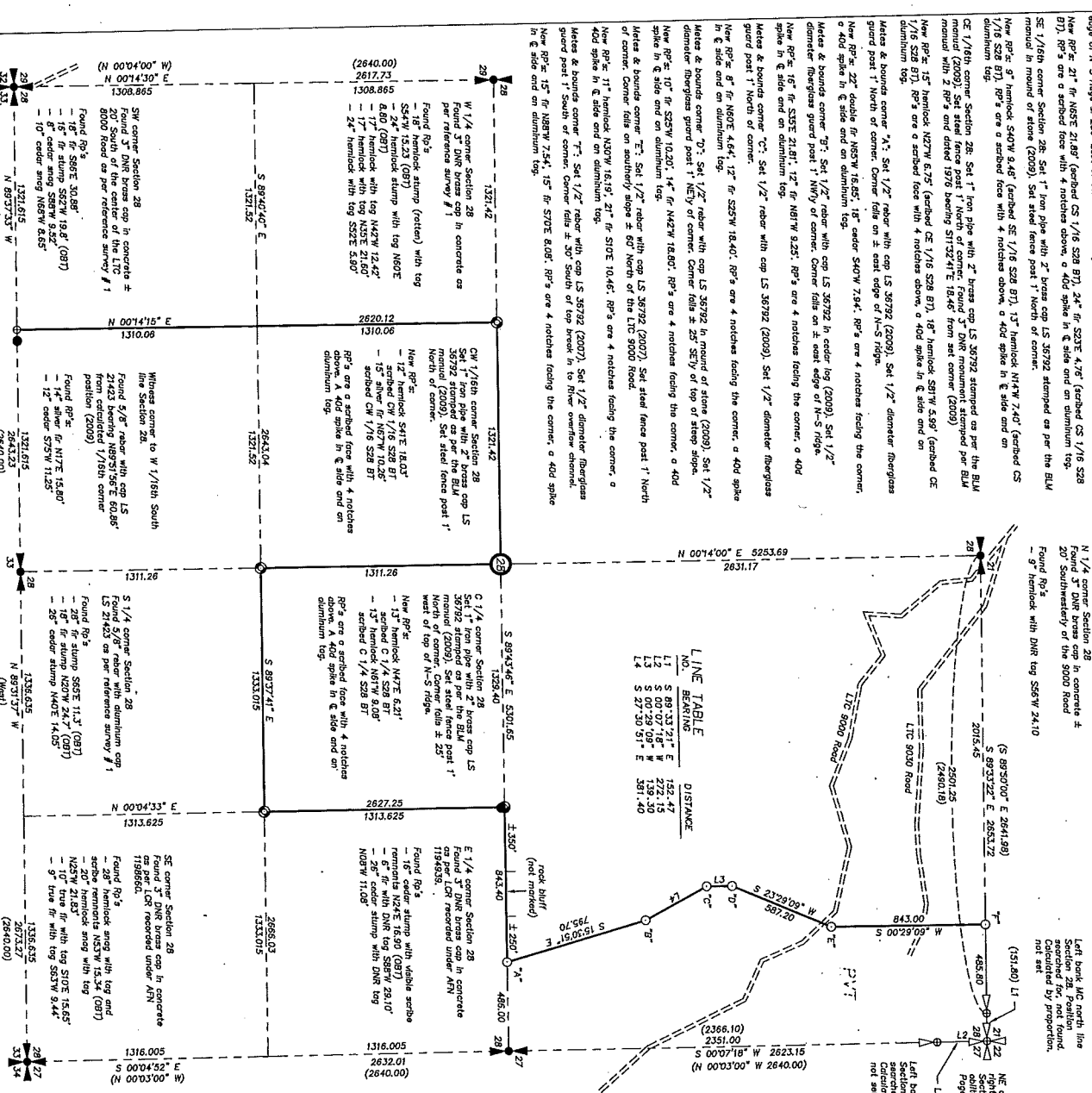
Portions of the SW 1/4, SE 1/4 and NE 1/4 of Section 28, Township 38 North, Range 6 East, W.M. in Whitcomb County, Washington



Additional established corners & accessories
 CS 1/16th corner Section 28. Set 1" iron pipe with 2" brass cap LS 36792 stamped as per the BLM manual (2009). Set steel fence post 1' North of corner. Corner falls on westerly edge of N-S ridge ± 250' East of center of drainage.
 New RP's: 21" for N55E 21.80' (fetched CS 1/16 S28 B1), 24" for S23E 4.76' (fetched CS 1/16 S28 B1), RP's are a scrubbed face with 4 notches above, a 40d spike in E side and an aluminum top.
 SE 1/16th corner Section 28. Set 1" iron pipe with 2" brass cap LS 36792 stamped as per the BLM manual (2009). Set steel fence post 1' North of corner.
 New RP's: 15" hemlock 540W 9.48' (fetched SE 1/16 S28 B1), 18" hemlock N47W 3.99' (fetched SE 1/16 S28 B1), RP's are a scrubbed face with 4 notches above, a 40d spike in E side and an aluminum top.
 CE 1/16th corner Section 28. Set 1" iron pipe with 2" brass cap LS 36792 stamped as per the BLM manual (2009). Set steel fence post 1' North of corner. Found 3" DNR monument per BLM manual with 2 RP's and dated 1976 bearing S175E 41E 16.46' from set corner (2009).
 New RP's: 15" hemlock W27W 6.75' (fetched CE 1/16 S28 B1), 18" hemlock S81W 2.59' (fetched CE 1/16 S28 B1), RP's are a scrubbed face with 4 notches above, a 40d spike in E side and an aluminum top.
 Metes & bounds corner "A": Set 1/2" rebar with cap LS 36792 (2009). Set 1/2" diameter fiberglass survey post 1' North of corner. Corner falls on ± east edge of N-S ridge.
 New RP's: 22" double for N55W 16.85', 18" cedar 540W 7.94', RP's are 4 notches facing the corner, a 40d spike in E side and an aluminum top.
 Metes & bounds corner "B": Set 1/2" rebar with cap LS 36792 in cedar log (2009). Set 1/2" diameter fiberglass survey post 1' NE of corner. Corner falls on ± east edge of N-S ridge.
 New RP's: 16" for S35E 21.81', 12" for N81W 9.23', RP's are 4 notches facing the corner, a 40d spike in E side and an aluminum top.
 Metes & bounds corner "C": Set 1/2" rebar with cap LS 36792 (2009). Set 1/2" diameter fiberglass survey post 1' North of corner.
 New RP's: 8" for N80E 4.64', 12" for S25W 18.40', RP's are 4 notches facing the corner, a 40d spike in E side and an aluminum top.
 Metes & bounds corner "D": Set 1/2" rebar with cap LS 36792 in mound of stone (2009). Set 1/2" diameter fiberglass survey post 1' NE of corner. Corner falls at 20' SE of top of steep slope.
 New RP's: 10" for S25W 10.20', 14" for N42W 18.80', RP's are 4 notches facing the corner, a 40d spike in E side and an aluminum top.
 Metes & bounds corner "E": Set 1/2" rebar with cap LS 36792 (2007). Set steel fence post 1' North of corner. Corner falls on southerly slope ± 60' North of the LIC 9000 Road.
 New RP's: 11" hemlock N30W 16.19', 21" for S10E 10.46', RP's are 4 notches facing the corner, a 40d spike in E side and an aluminum top.
 Metes & bounds corner "F": Set 1/2" rebar with cap LS 36792 (2007). Set 1/2" diameter fiberglass survey post 1' South of corner. Corner falls at 30' South of top break in to River overflow channel.
 New RP's: 15" for N88W 7.54', 15" for S70E 8.08', RP's are 4 notches facing the corner, a 40d spike in E side and an aluminum top.

LINE TABLE

NO.	BEARINGS	DISTANCE
L1	S 89°33'21" E	152.47
L2	S 07°22'08" W	139.30
L3	S 27°30'51" E	381.40



N 1/4 corner Section 28
 Found 3" DNR brass cap in concrete ± 20' Southwesterly of the 9000 Road
 Found RP's
 - 9" hemlock with DNR tag S65W 24.10'
 Left bank MC north line
 Section 28. Position
 recorded by proportion,
 not set.
 NE corner Section 28 and
 NW corner Section 27. Position
 calculated by proportion,
 not set.
 L2 (271390)
 Left bank MC east line
 Section 28. Position
 calculated by proportion,
 not set.
 Found corner as noted
 Set 1/2" rebar with cap LS 36792
 Section 28. Position
 calculated by proportion,
 not set.
 LS 36792 stamped per BLM manual
 Calculated position
 Peated and painted property line
 Approximate location of road taken from field
 traverse control.
 CLO bearing or distance
 [] Other record bearing or distance

Record of Survey Description (oil in Section 28-138N-86E, W.M.):
 The west line of the East 1/2 of the SW 1/4, the north and east lines of the NE 1/4 of the SW 1/4, the south and east lines of the NW 1/4 of the SE 1/4, a portion of the north line of the NE 1/4 of the SE 1/4 and the west line of the following described parcel:
 Beginning at the northeast corner between Sections 21 and 28, thence West along the north line of Section 21, 153.3 feet; thence East 466.0 feet; thence South 321.4 feet; thence South 16' East 816.0 feet; thence East 466.0 feet along the quarter line of Section 28 to the quarter corner of Section 28, a distance of 2365.1 feet; thence North along the section line between Sections 27 and 28, thence in a Northwesterly direction along the meander line a distance of 310 feet to the Point of Beginning, situated in Township 38 North, Range 6 East of W.M.
 Situated in County of Whitcomb, State of Washington.

Certificate Number: 261364-01
 Filed for record this 14th day of November, 2009, at LISBELL, in Book _____ of _____, incorporated
 At the request of Butler Surveying, Incorporated
 Sherry Sherry by *Sherry Sherry*
 County Auditor

Surveyor's Certificate
 This map correctly represents a survey made by me
 and conforms to the requirements of the Survey Recording Act of the
 request of Longview Timber Co. in October of 2009.

Christopher M. Butler, PLS
 Certificate No. 36782

BUTLER SURVEYING INC.
 475 N CHEVALETS AVENUE
 P.O. BOX 148, CHEVALETS, VA 98022
 360/749-8903

Drawn C. Butler
 Date 10-21-09
 Job No. 04-192
 Scale 1" = 400'
 Sheet 1 of 1

Butler Surveying Inc. logo and contact information.

Scale 1" = 400'

Sheet 1 of 1