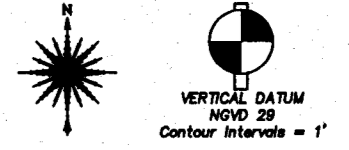
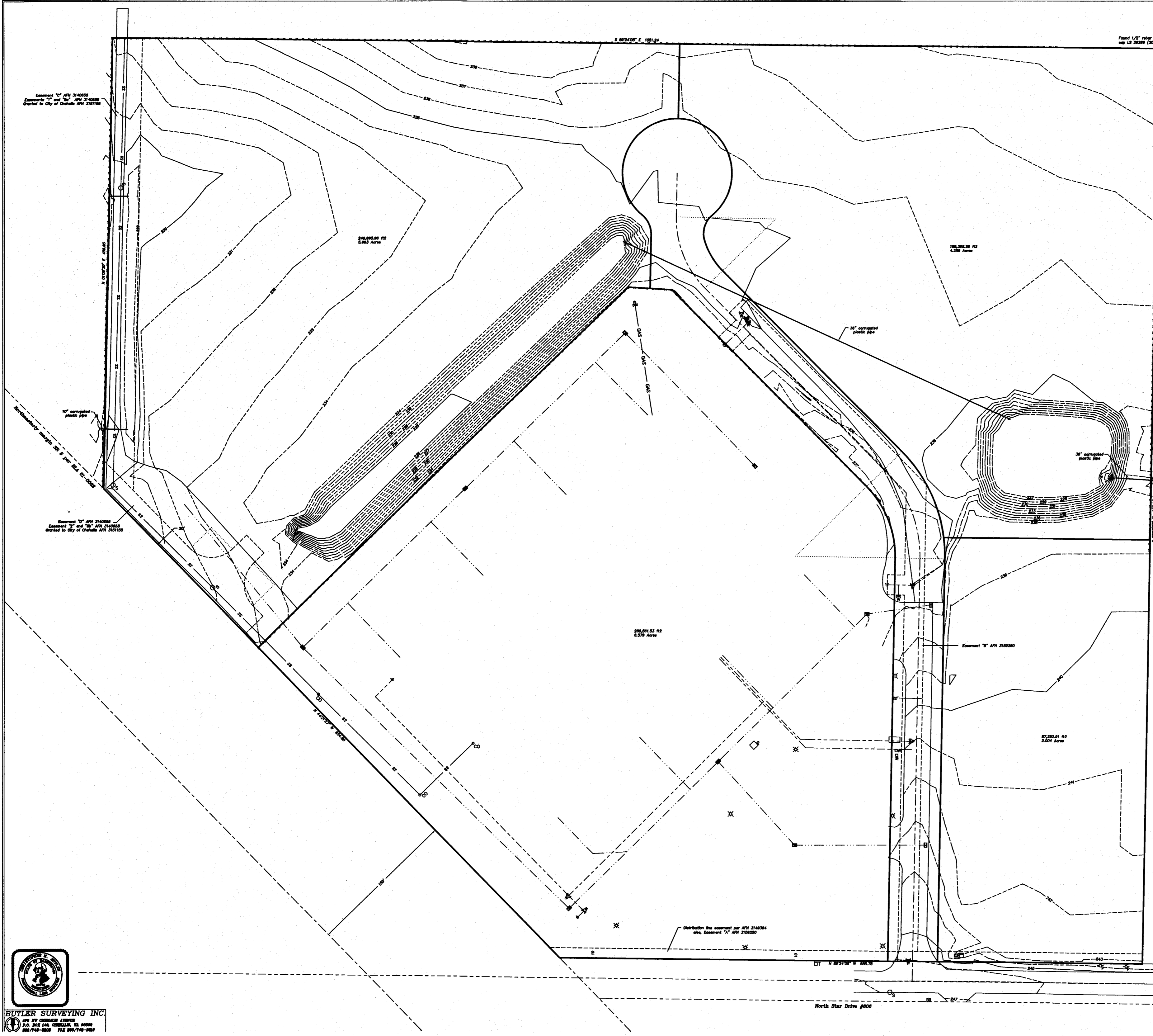


A Topographic Survey of
 TPN 017884004003 being a portion of the
 South 1/2 of the Northeast 1/4
 of Section 15, Township 13 North, Range 2 West,
 W.M. in Lewis County, Washington



SCALE: 1"=30 FEET
 0 15 30 60

- Power Pole
- Power Vault
- Transformer
- Street Light
- C.T.
- Telephone pedestal
- Sanitary sewer manhole
- Sanitary sewer cleanout
- Sanitary sewer line
- Catch Basin
- Storm drain line
- Water valve
- Water meter
- Hydrant
- Water line
- Gas valve
- Gas line
- Fence line



North Star Drive #000