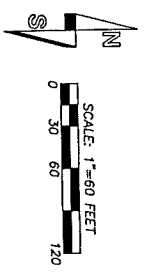


A portion of the SE 1/4 of the NW 1/4 of Section 25, Township 14 North, Range 9 West, W.M. in Pacific County, Washington. (Page 2 of 2 Pages)



Basis of bearings: N42°22'11"E between the West 1/4 corner and North 1/4 corner of Section 25 as per Record of Survey recorded in Book 20 of Surveys of Pacific County, Washington.

- Found corner as noted
- Set V/2" rebar with cap LS 38792
- ⊙ Calculated position

Reference surveys:
 1) Part of Fourth Addition to Raymond, Book D, Page 102 (1907)
 2) Part of Fifth Addition to Raymond, Book D, Page 111 (1909)
 3) Part of Sixth Addition to Raymond, Book D, Page 124 (1910)
 4) J.C. News, P.L.S. 17074, Book 2, Page 180-181 (1922)
 5) J.C. News, P.L.S. 12313, Book 9, Page 107 (1926)
 6) J.C. News, P.L.S. 12313, Book 9, Page 54 (1926)
 7) R.L. Smith, P.L.S. 26610, Book 10, Page 68 (1927)
 8) W.A. Ruff, P.L.S. 36610, Book 20, Page 68 (1927)
 9) A.E. Higgins, P.L.S. 36610, Book 21, Page 171 (2010)
 10) W.A. Ruff, P.L.S. 36610, Book 21, Page 171 (2010)

Method of survey: Closed loop field traverse using a Topcon GTS-220 (0070057) total station with 1" accuracy and standard precision requirements as set forth in WA SCS-120-090.

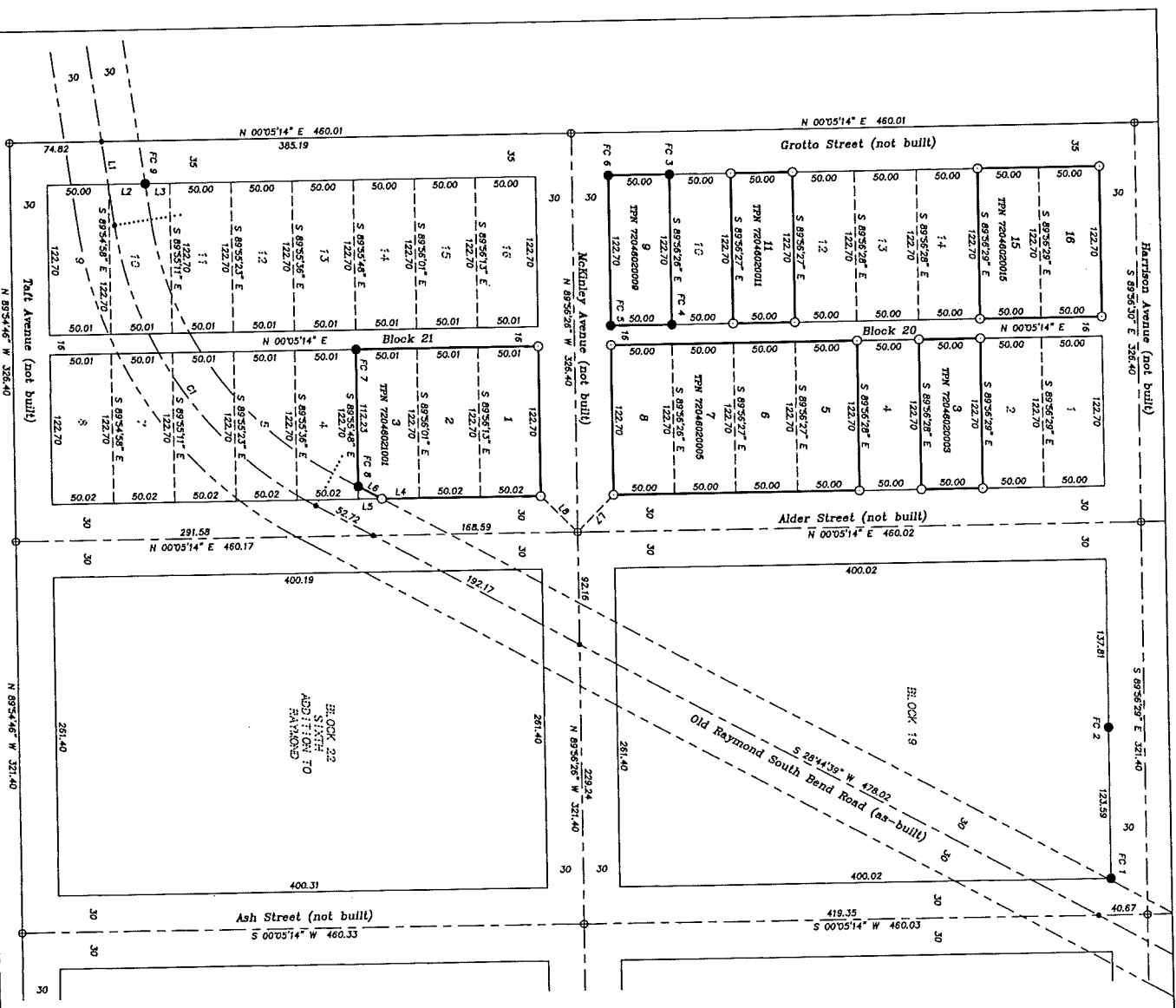
- FC 1: Found 5/8" rebar with cap LS 17674 bearing N89°50'W 1.13' from calculated block corner (2011)
- FC 2: Found 5/8" rebar with cap LS 30630 (2011)
- FC 3: Found 5/8" rebar with cap LS 13313 bearing S66°40'W 0.45' from calculated position (2011)
- FC 4: Found 5/8" rebar with cap LS 13313 bearing S80°59'W 0.45' from calculated position (2011)
- FC 5: Found 5/8" rebar with cap LS 13313 bearing S89°18'W 0.42' from calculated position (2011)
- FC 6: Found 5/8" rebar with cap LS 13313 bearing S81°59'W 0.49' from calculated position (2011)
- FC 7: Found 5/8" rebar with no cap bearing S23°09'W 0.67' from calculated position (2011)
- FC 8: Found 5/8" rebar with cap LS 17674 bearing S33°34'W 0.81' from calculated position (2011)
- FC 9: Found 5/8" rebar with no cap bearing S82°20'W 0.20' from calculated rebar intersection (2011)

CURVE TABLE

NO.	DELTA	RADIUS	LENGTH
CI	53°20'46"	515.00	293.29

LINE TABLE

LINE BEARING	DISTANCE
L1	S 82°05'25" E 68.20
L2	N 00°05'14" E 30.03
L3	N 00°05'14" E 19.87
L4	S 00°05'14" W 19.15
L5	N 26°44'39" E 21.62
L6	N 44°55'36" E 42.42
L7	N 44°55'36" W 42.42
L8	S 43°04'24" W 42.44



BUTLER SURVEYING INC.
 470 N. 3RD ST. CHESAPEAKE, VA 23042
 800/746-8000

Drawn C. Butler Date 2-24-12
 Checked DS Job No. 71-66
 Scale 1" = 60' Sheet 2 of 2